

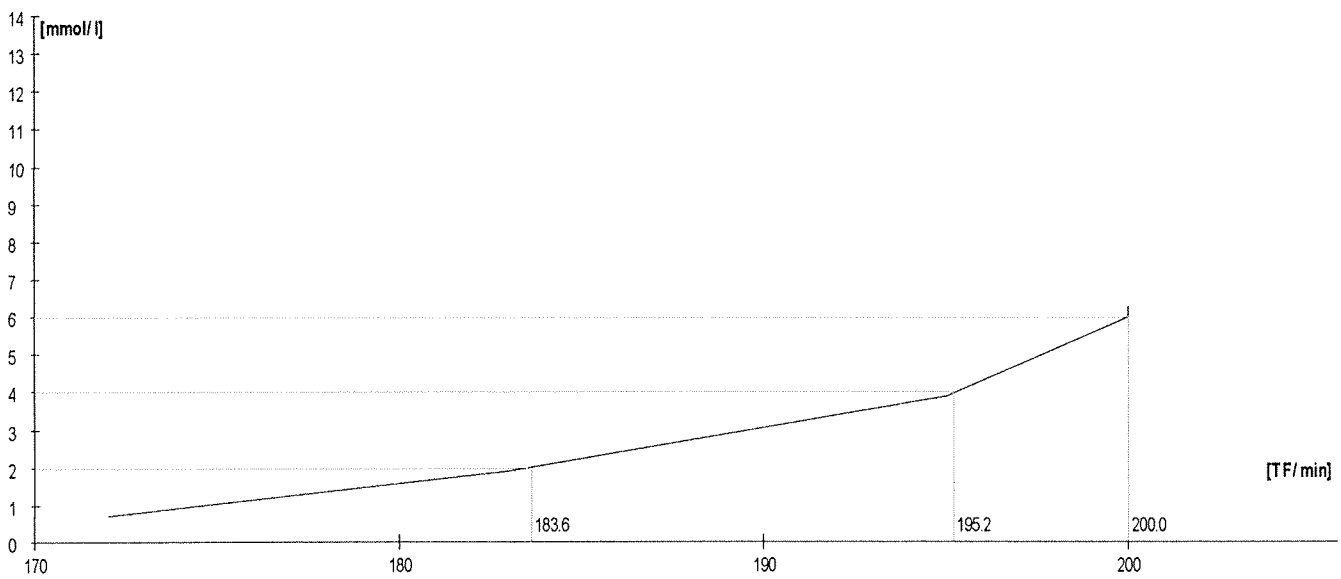
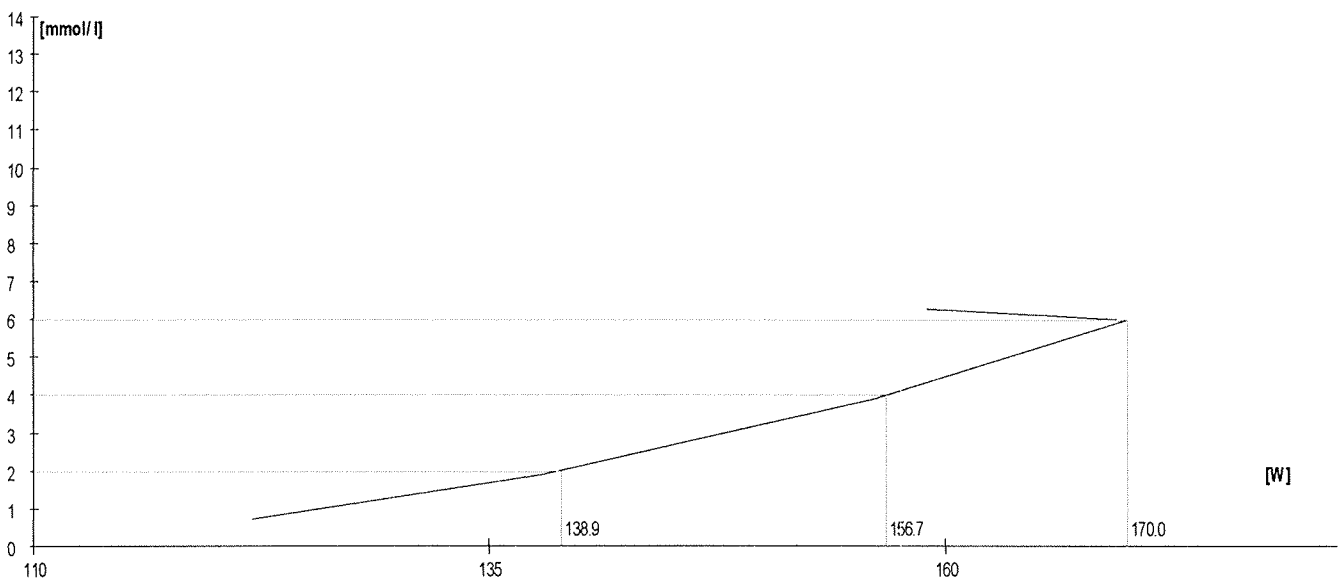
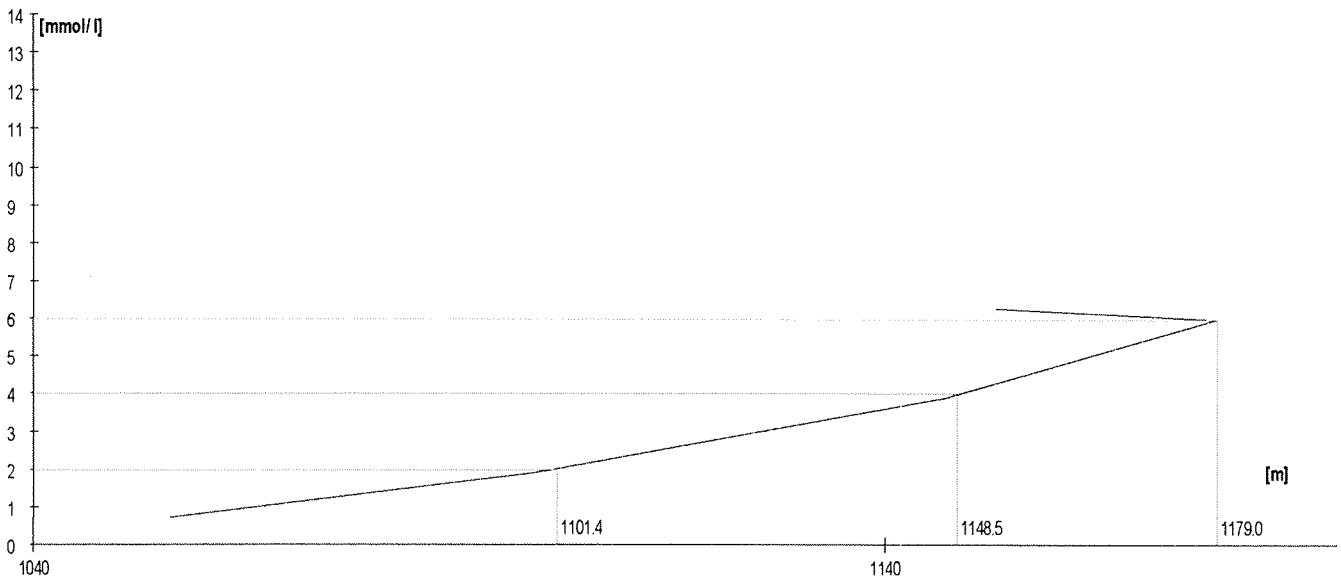
VESLOVÁNÍ PRAHY - JUNIOŘI - PRAHA - 20. října 2013

JMENO	WATY	PRAHY
ŠVEC	309,0	234,6
NEUMAN	325,0	267,8
TŘEČEK	280,0	242,6
ŠIMÁNEK	353,0	285,4
SOUČEK	361,0	291,0
MOTL	344,0	283,3
ZAJÍČEK	321,0	267,4
ŠAMS	403,0	328,4
HOLLAS	351,0	321,0
RYBÍN	IV.zát-299	250,2
MARÍK	351,0	308,3
VAJNER	296,0	262,1
PAVLŮ	310,0	261,8
VONDRÁČEK	251,0	206,0
NÁPRAVNÍK	308,0	262,5
VÍŠEK	264,0	191,6
JANÁK	302,0	278,8
INGER	334,0	259,1
KLÍMA	354,0	302,6
HEJNA	312,0	237,1
ONDRÁČKOVÁ	198,0	188,6
HANZLOVÁ	199,0	188,5
MARTINCOVÁ	207,0	198,3
NENCINI	236,0	199,0
NIEDERLOVÁ	207,0	181,2
ŽABOVÁ A.	230,0	213,8
PEKÁRKOVÁ	IV.zát-170	156,7
KOBEROVÁ*)	IV.zát-181	168,4

*)jela pouze 4 zátěže

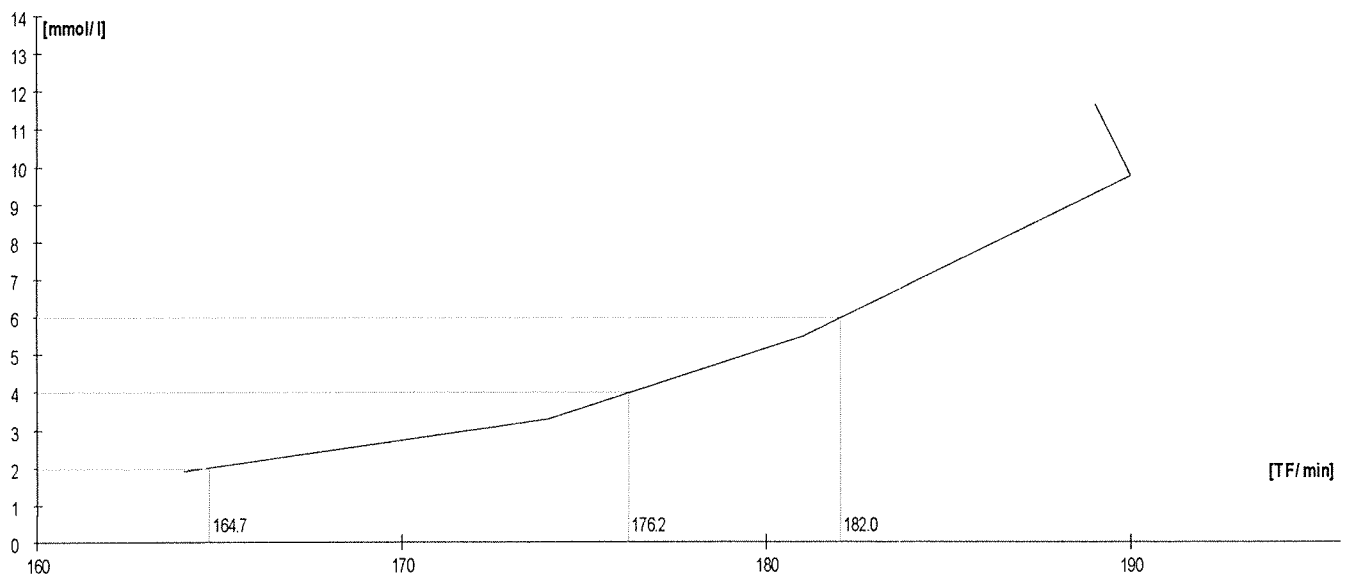
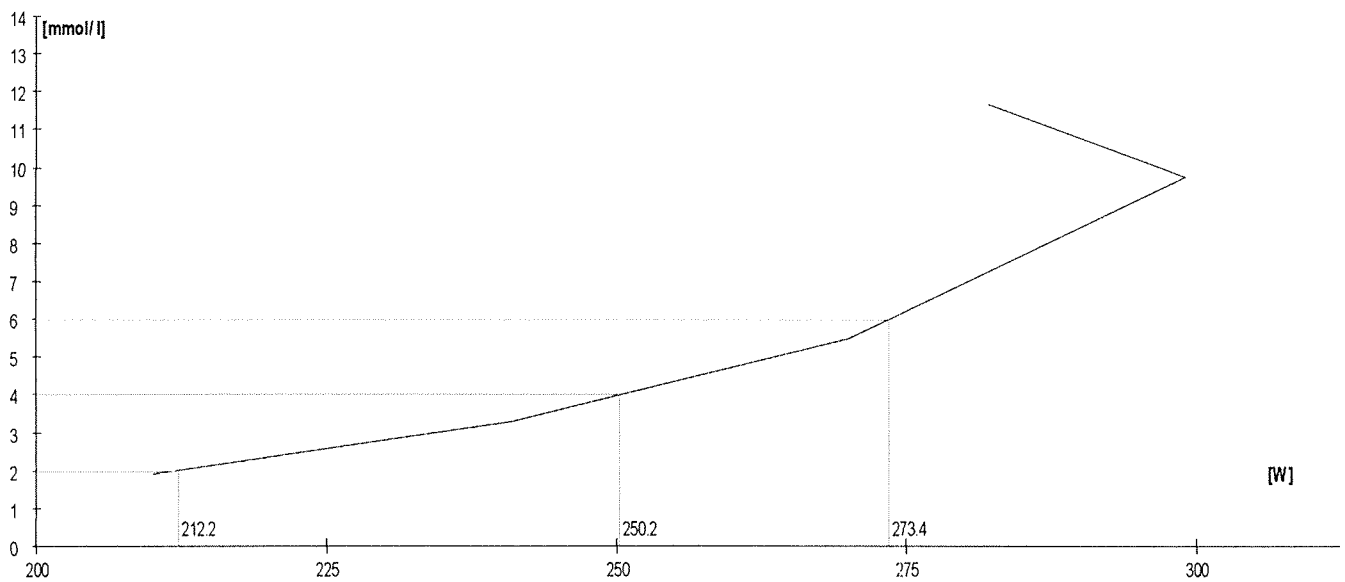
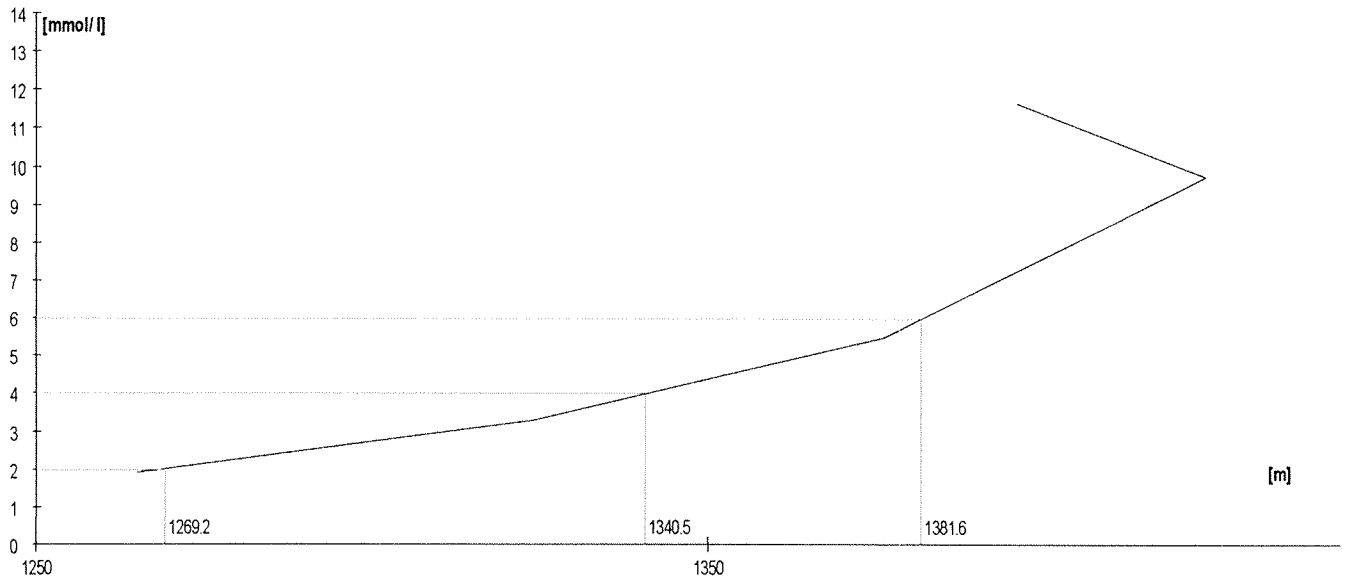
	Rozm. [W]	Výkon [m]	W	TF/min	Lakt.
1.	120	1056	122	172	0,7
2.	140	1099	138	183	1,9
3.	160	1147	156	195	3,9
4.	180	1179	170	200	6,0
5.	200	1153	159	200	6,3

Lakt.	TF/min	W
2.0	183.6	138.9
3.0		
4.0	195.2	156.7
5.0		
6.0	200.0	170.0
7.0		
8.0		



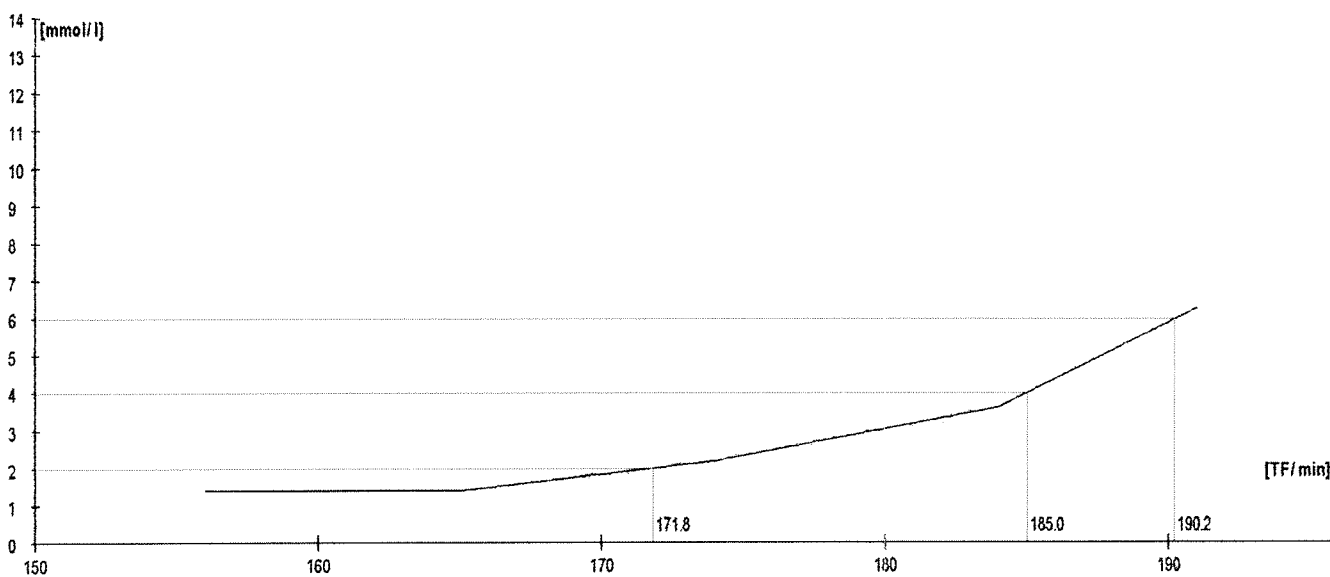
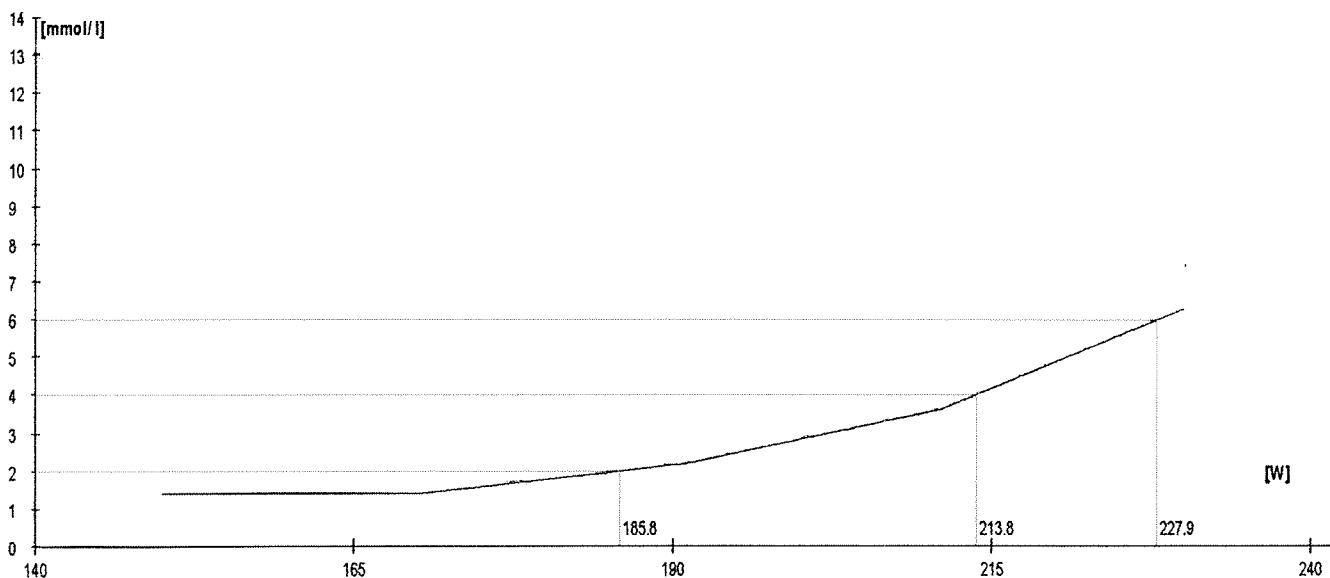
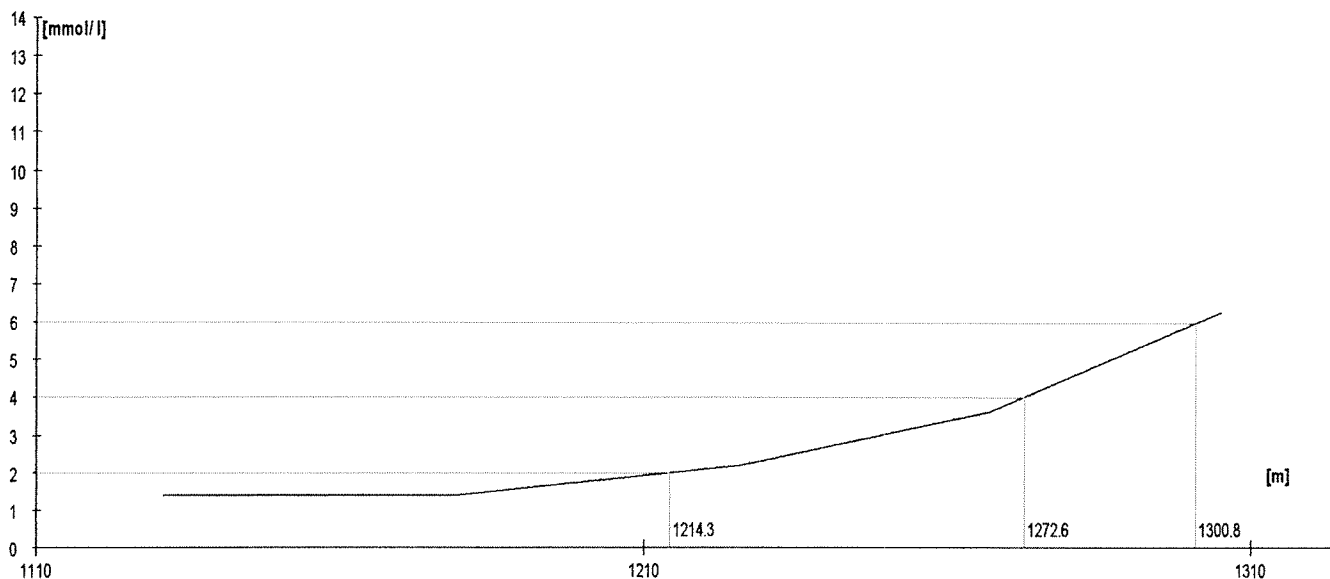
	Rozm. [W]	Výkon [m]	W	TF/min	Lakt.
1.	210	1265	210	164	1,9
2.	240	1324	241	174	3,3
3.	270	1376	270	181	5,5
4.	300	1424	299	190	9,8
5.	330	1396	282	189	11,7

Lakt.	TF/min	W
2.0	164.7	212.2
3.0		
4.0	176.2	250.2
5.0		
6.0	182.0	273.4
7.0		
8.0		



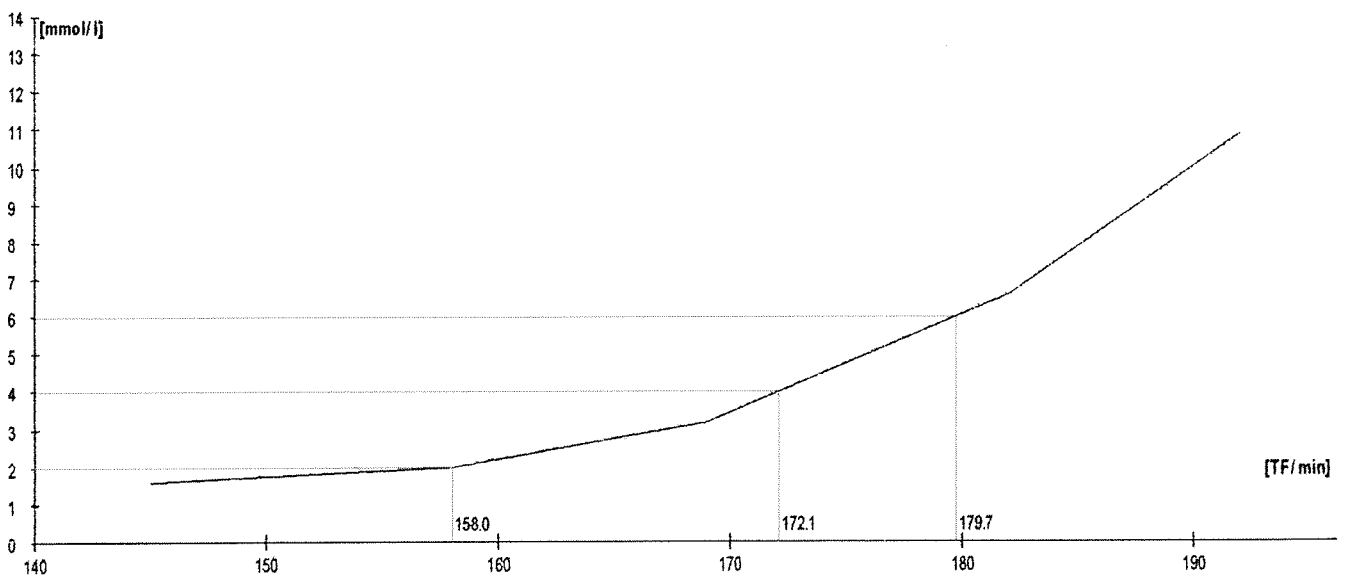
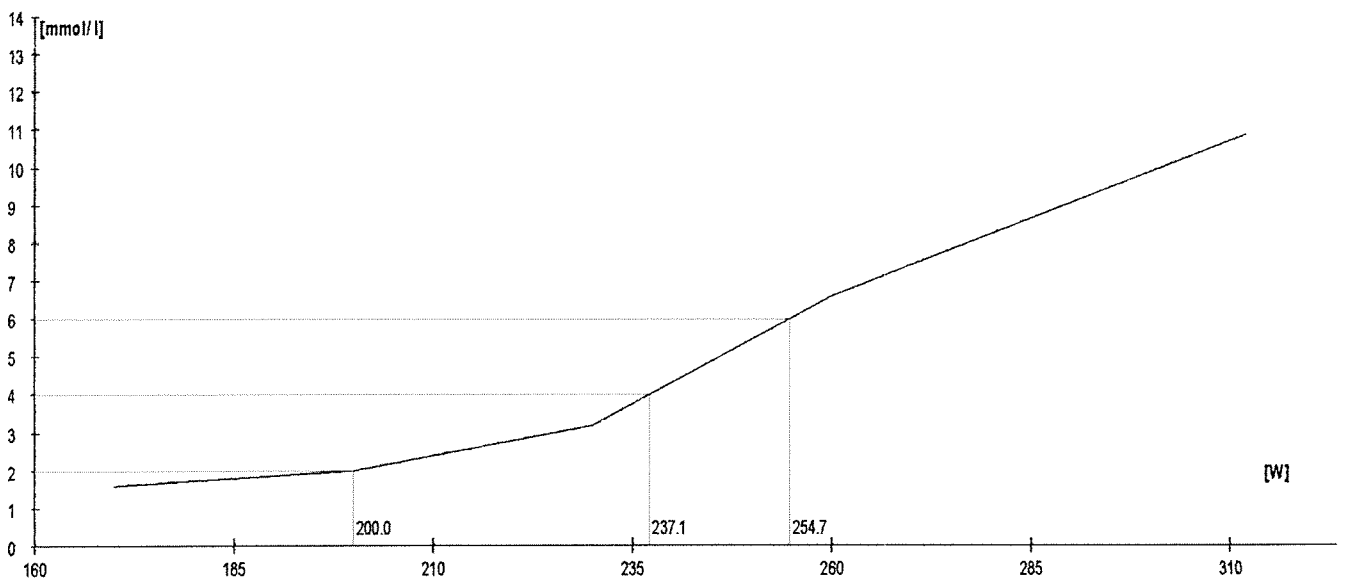
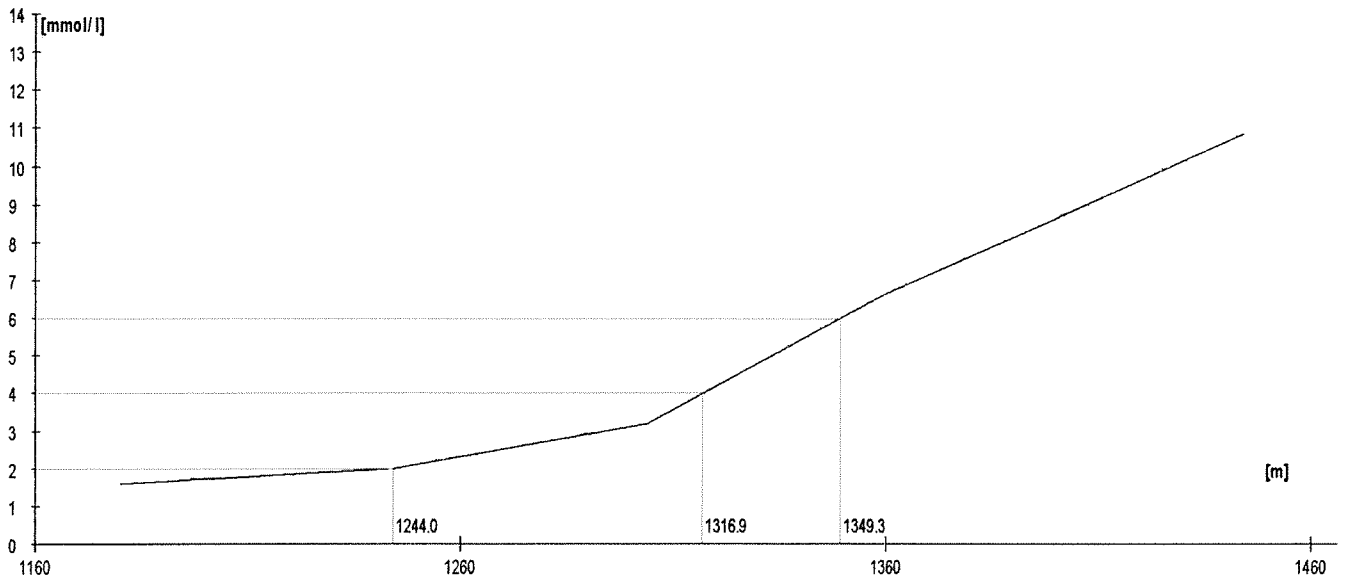
	Rozm.[W]	Výkon [m]	W	TF/min	Lakt.
1.	150	1131	150	156	1.4
2.	170	1179	170	165	1.4
3.	190	1226	191	174	2.2
4.	210	1267	211	184	3.6
5.	230	1305	230	191	6.3

Lakt	TF/min	W
2.0	171.8	185.8
3.0		
4.0	185.0	213.8
5.0		
6.0	190.2	227.9
7.0		
8.0		



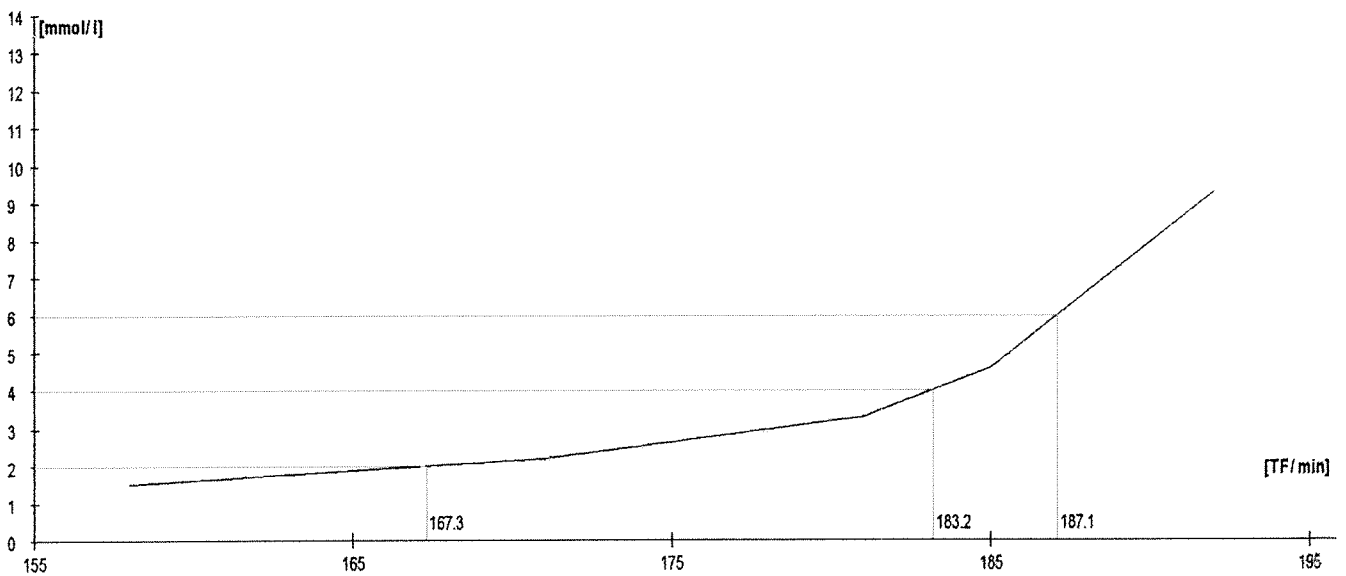
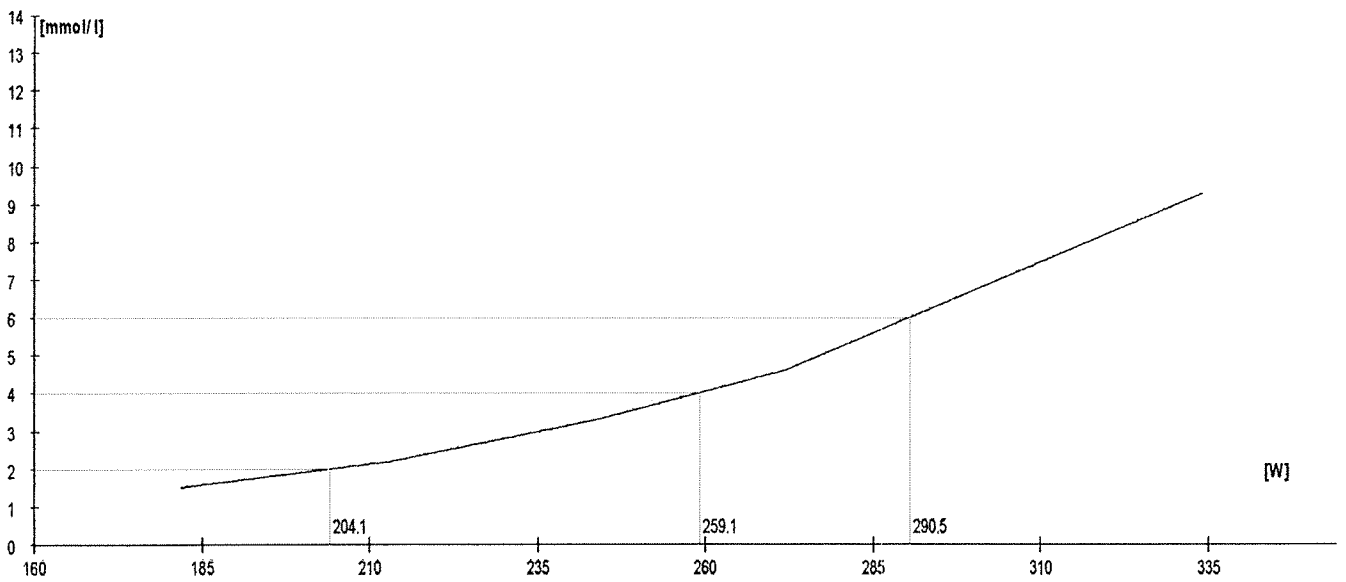
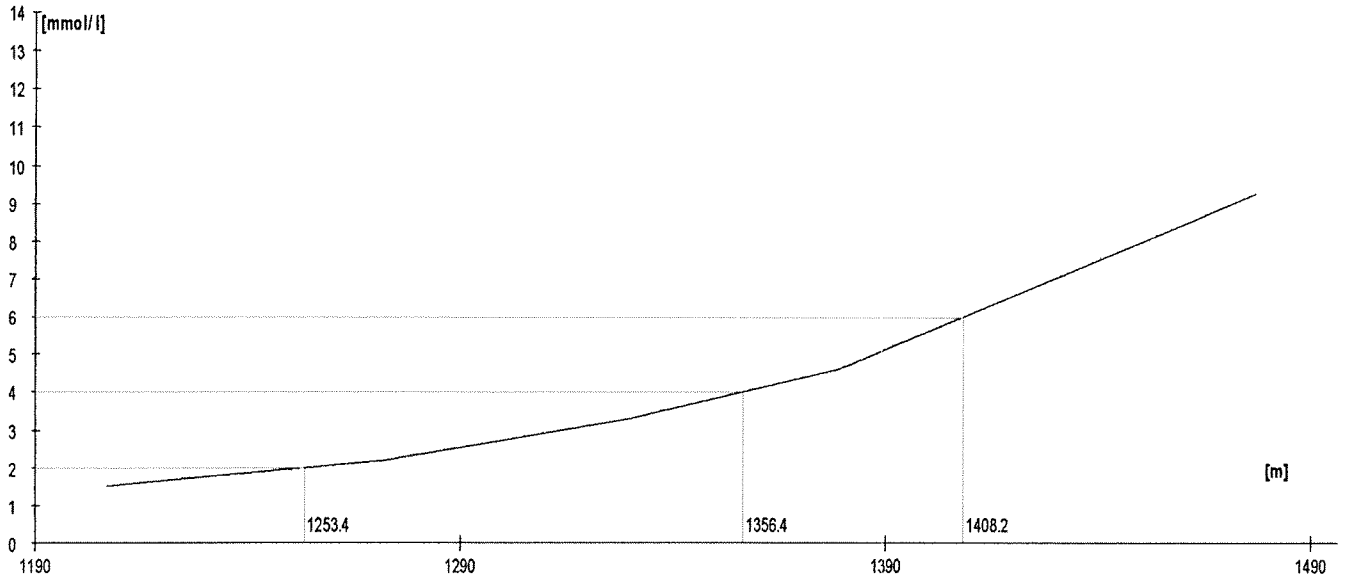
	Rozm. [W]	Výkon [m]	W	TF/min	Lakt.
1.	170	1180	170	145	1,6
2.	200	1244	200	158	2,0
3.	230	1304	230	169	3,2
4.	260	1359	260	182	6,6
5.	max	1444	312	192	10,9

Lakt.	TF/min	W
2.0	158.0	200.0
3.0		
4.0	172.1	237.1
5.0		
6.0	179.7	254.7
7.0		
8.0		



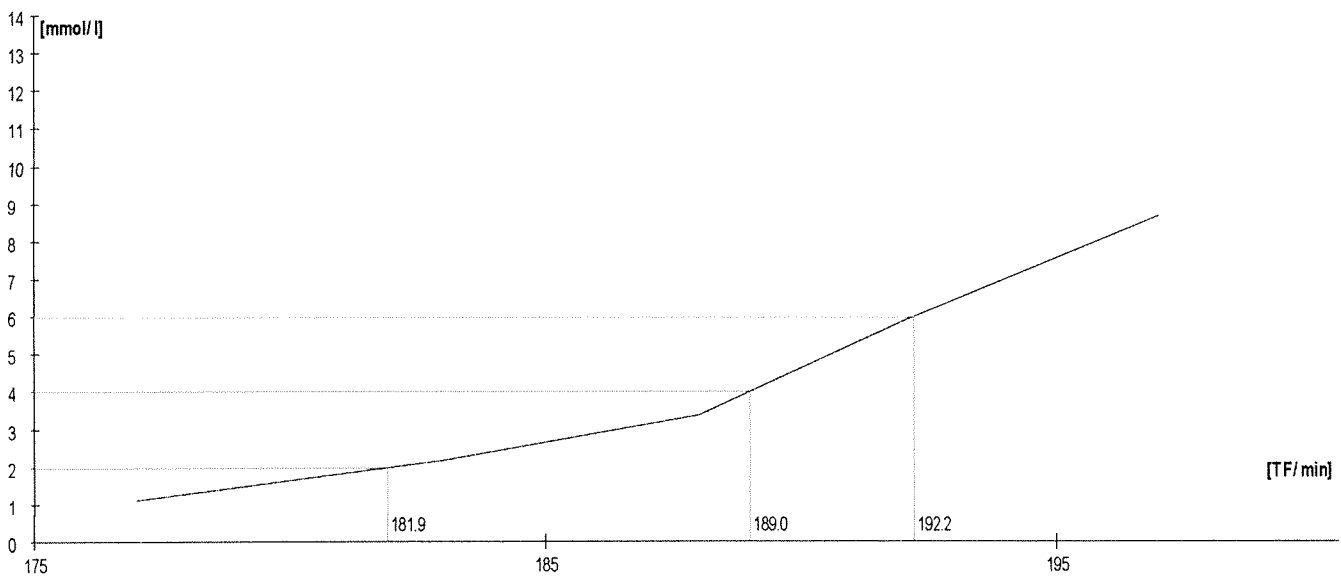
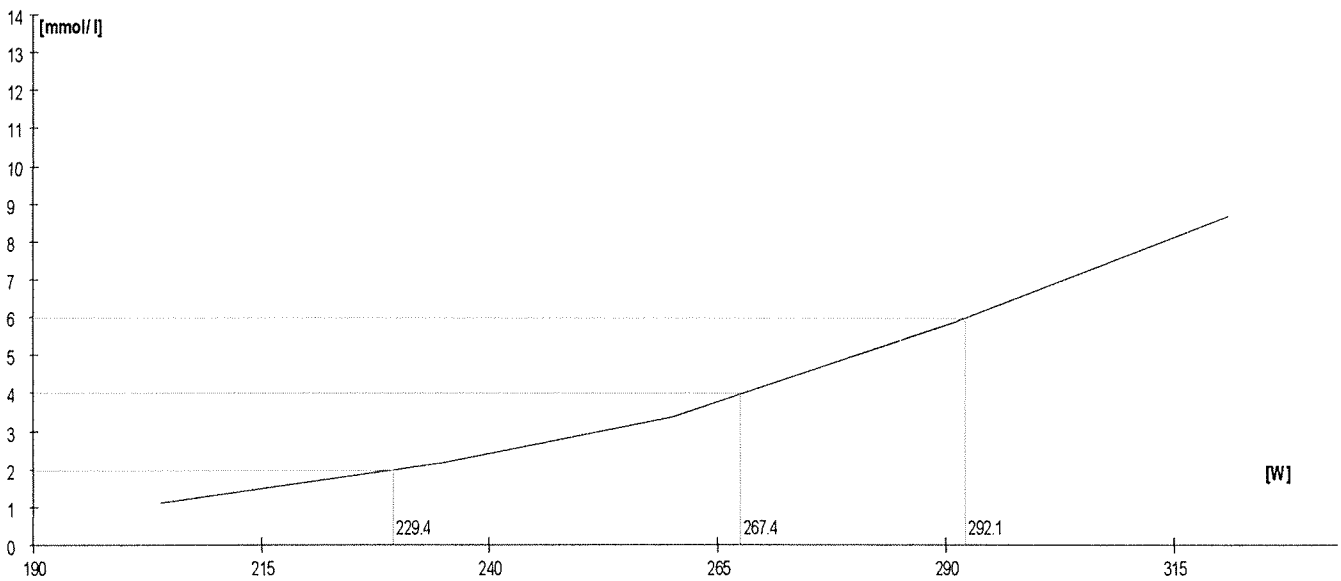
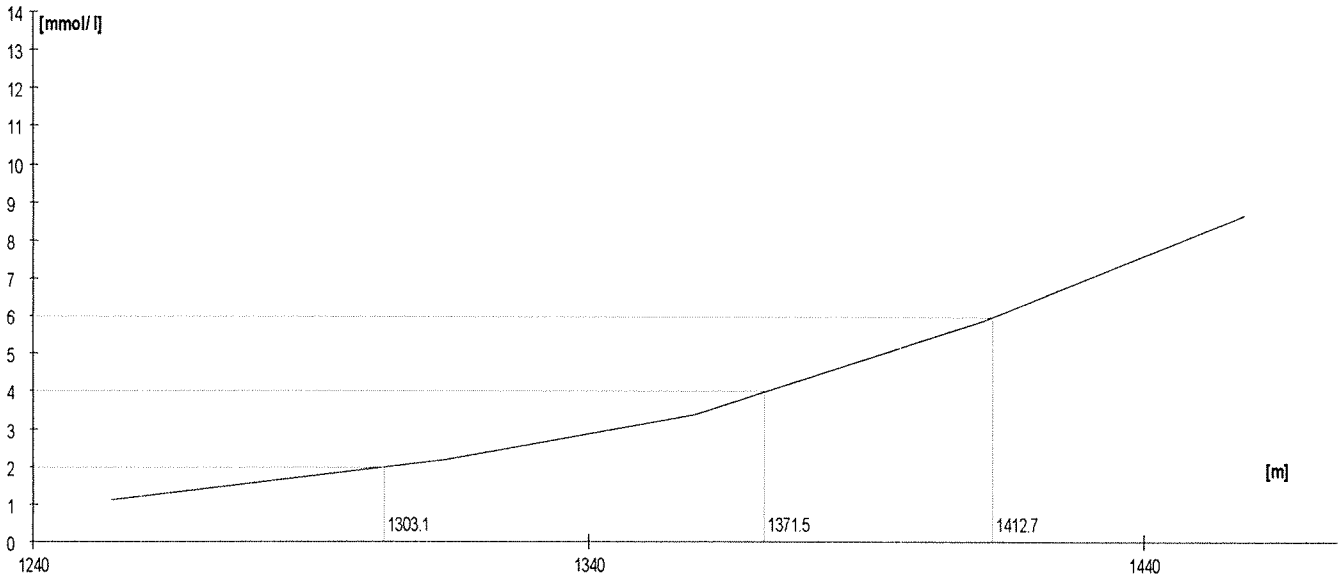
	Rozm.[W]	Výkon [m]	W	TF/min	Lakt.
1.	180	1207	182	158	1,5
2.	210	1272	213	171	2,2
3.	240	1330	244	181	3,3
4.	270	1379	272	185	4,6
5.	300	1477	334	192	9,3

Lakt.	TF/min	W
2.0	167.3	204.1
3.0		
4.0	183.2	259.1
5.0		
6.0	187.1	290.5
7.0		
8.0		



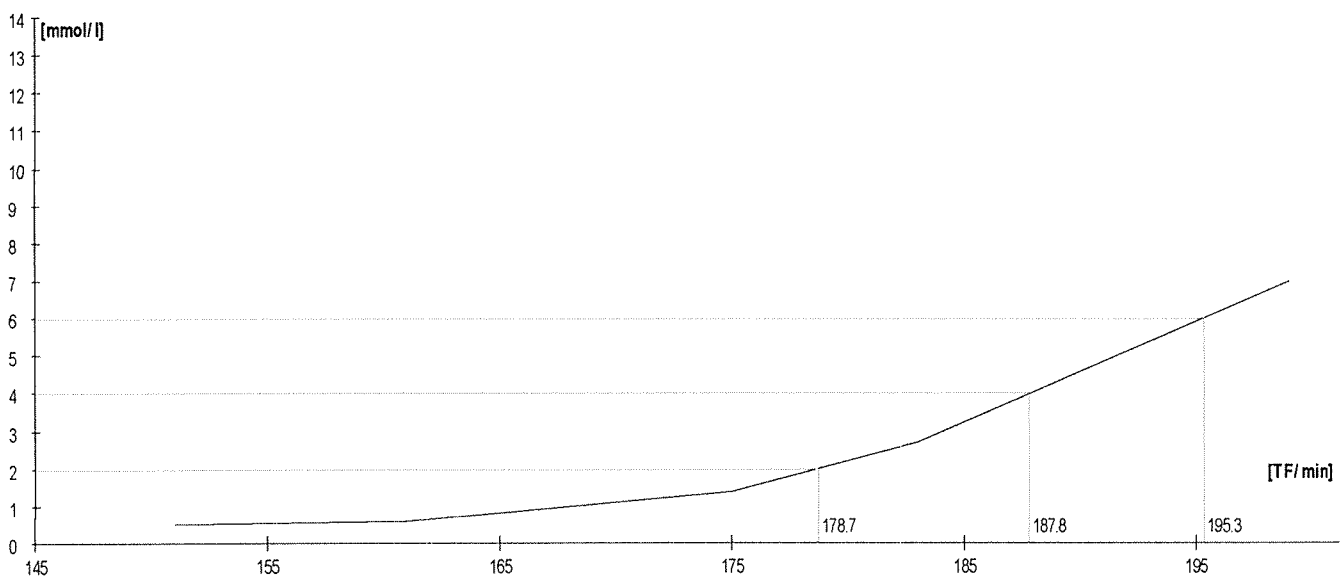
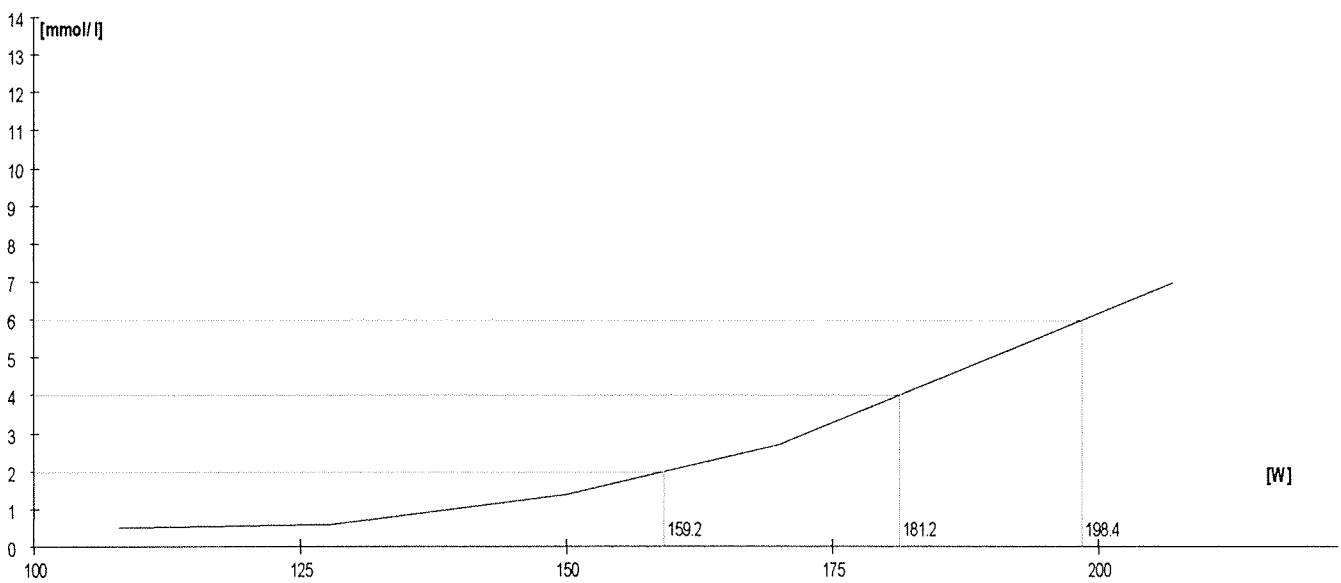
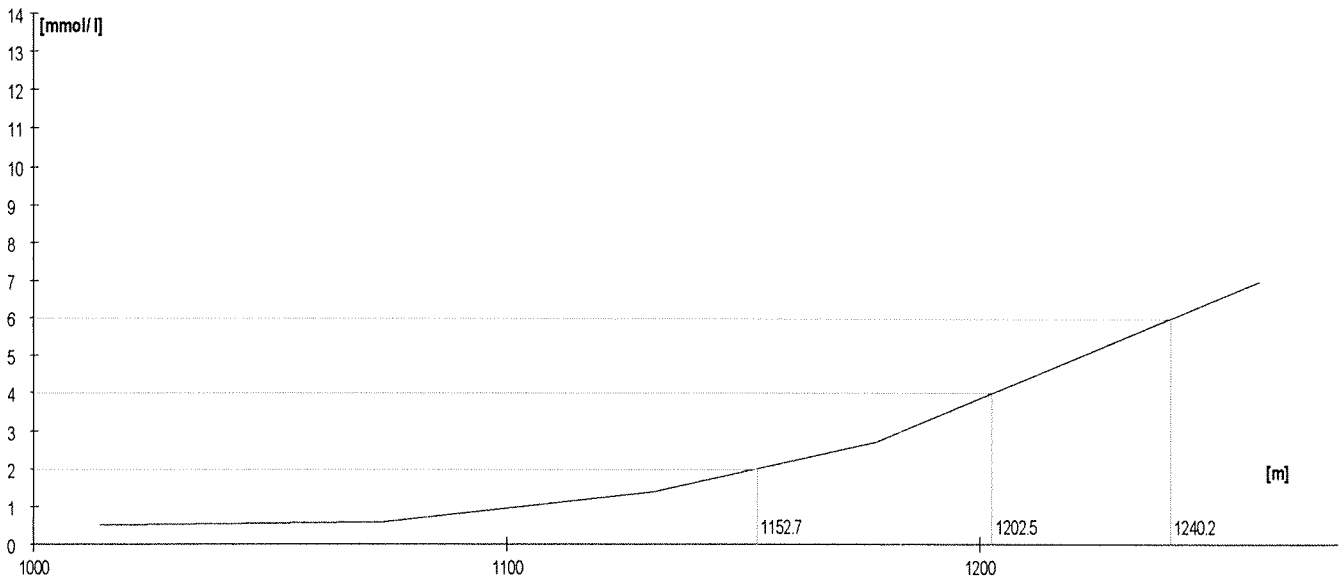
	Rozm. [W]	Výkon [m]	W	TF/min	Lakt.
1.	200	1254	204	177	1,1
2.	230	1314	235	183	2,2
3.	260	1359	260	188	3,4
4.	290	1411	291	192	5,9
5.	320	1458	321	197	8,7

Lakt.	TF/min	W
2.0	181.9	229.4
3.0		
4.0	189.0	267.4
5.0		
6.0	192.2	292.1
7.0		
8.0		



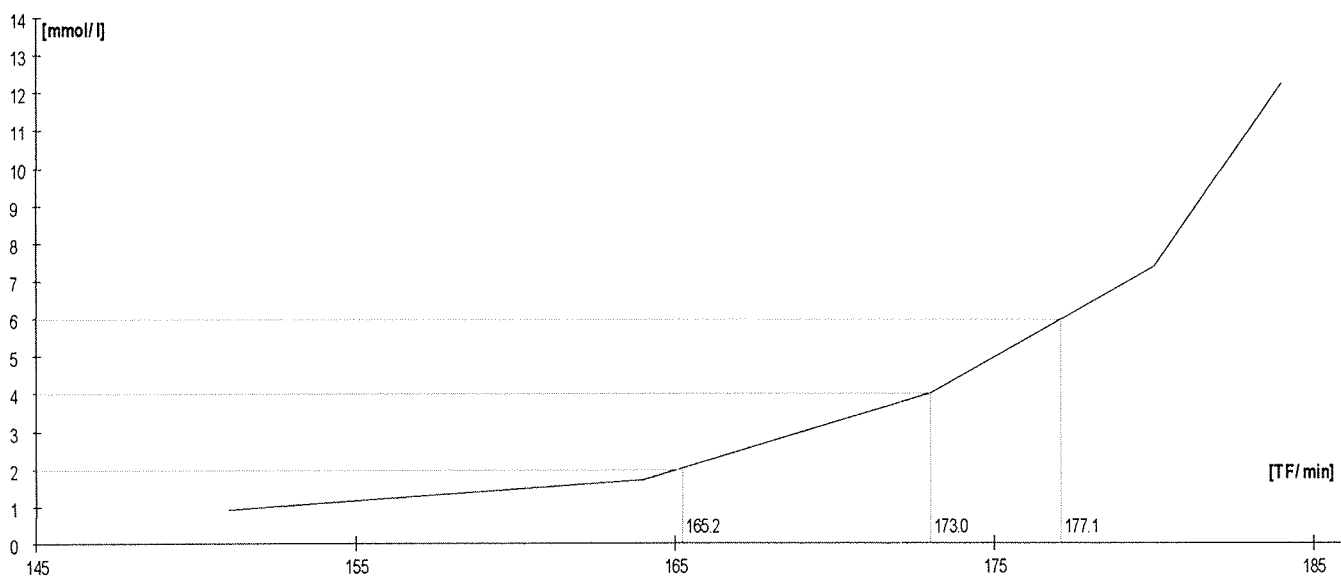
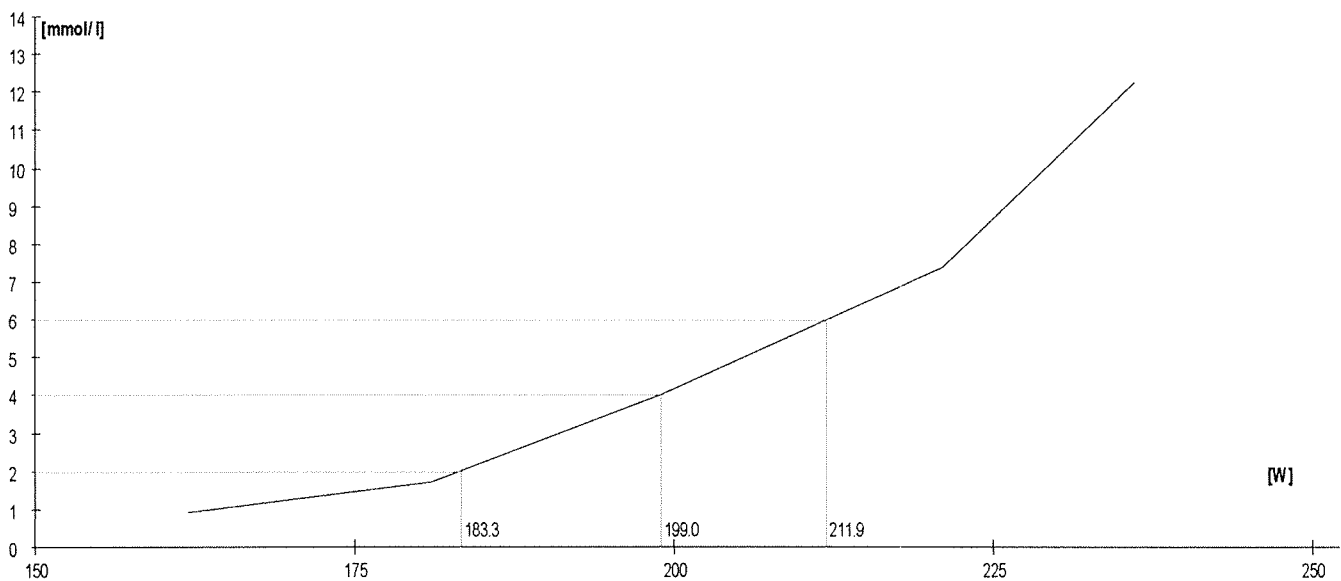
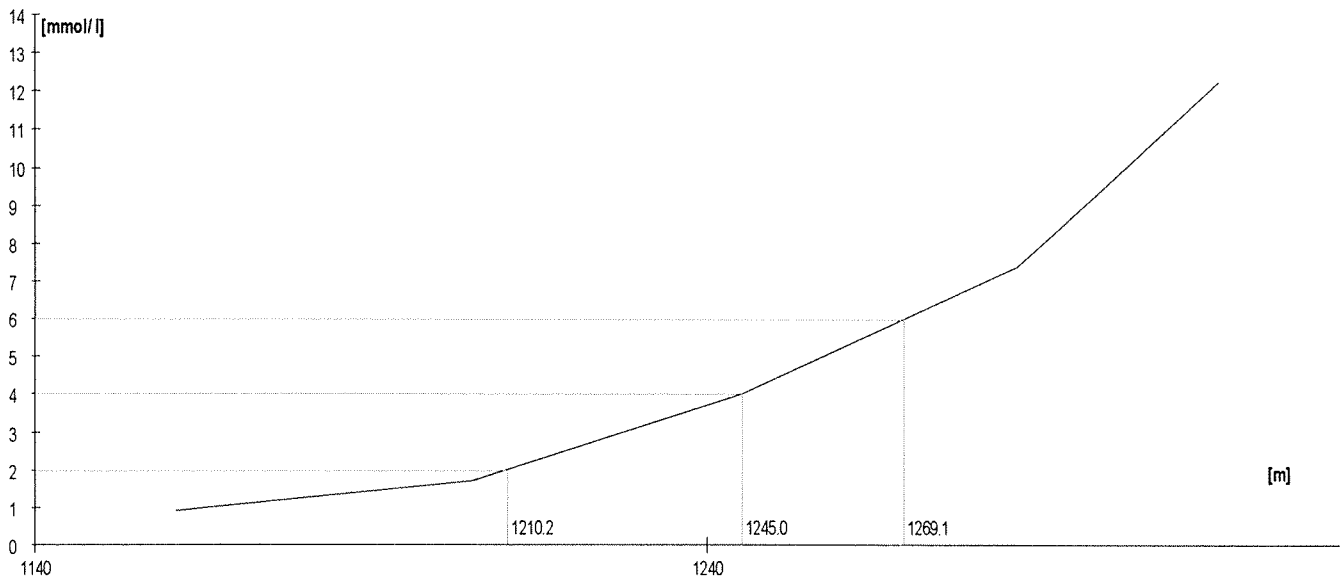
	Rozm. [W]	Výkon [m]	W	TF/min	Lakt.
1.	110	1014	108	151	0,5
2.	130	1074	128	161	0,6
3.	150	1131	150	175	1,4
4.	170	1178	170	183	2,7
5.	190	1259	207	199	7,0

Lakt.	TF/min	W
2.0	178.7	159.2
3.0		
4.0	187.8	181.2
5.0		
6.0	195.3	198.4
7.0		
8.0		



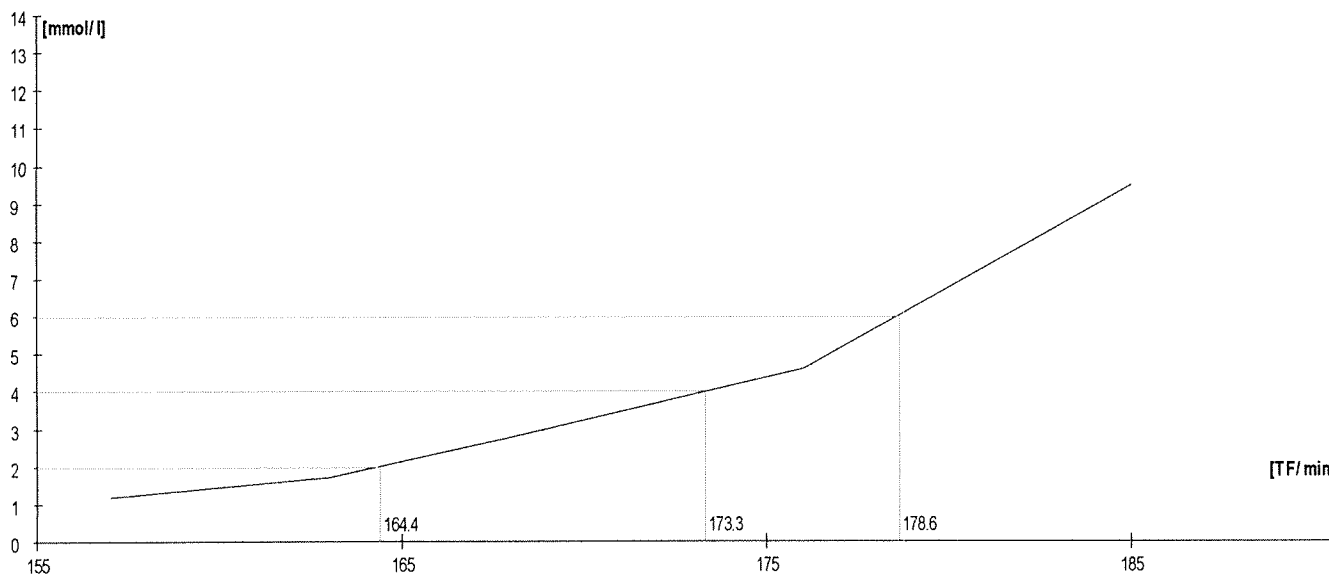
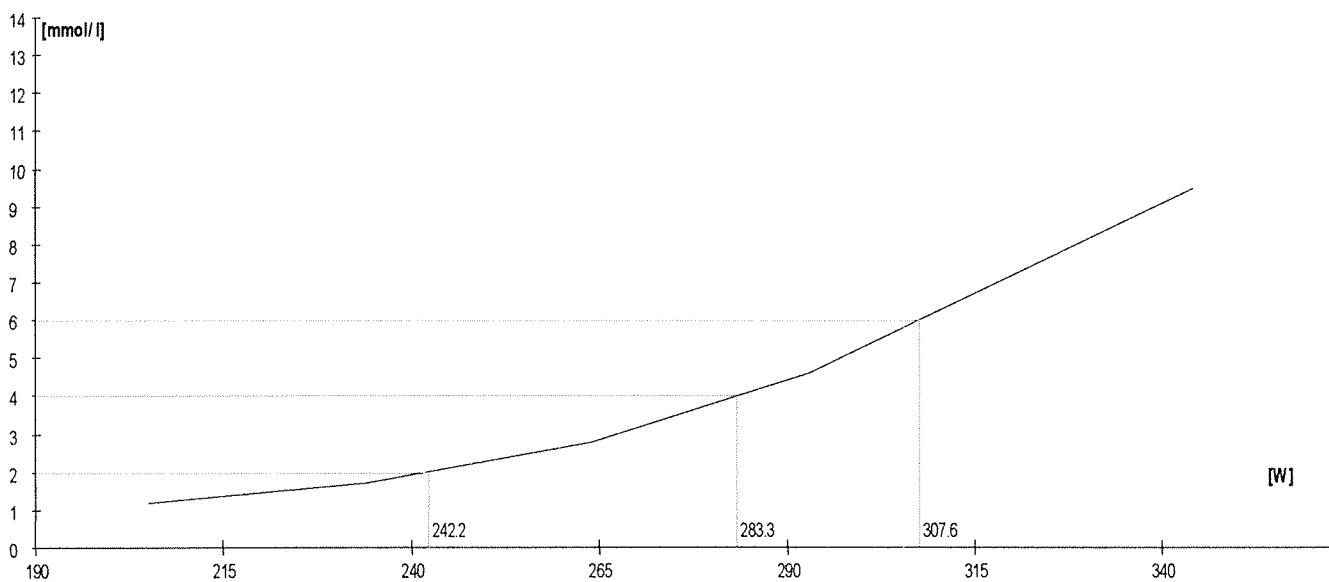
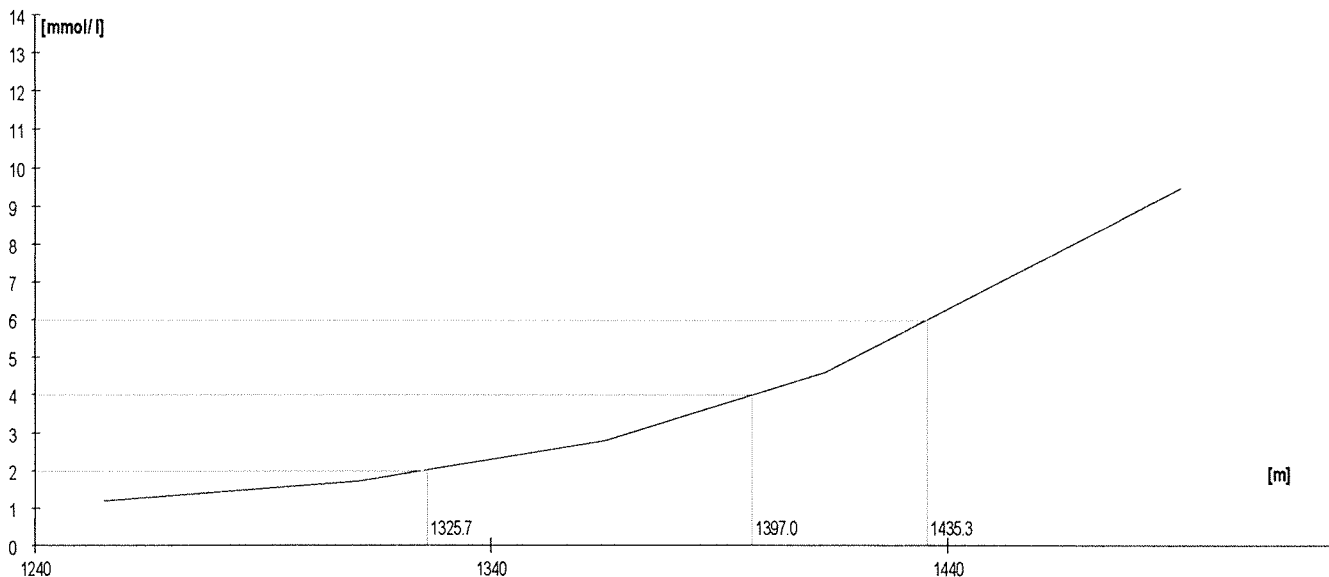
	Rozm. [W]	Výkon [m]	W	TF/min	Lakt.
1.	160	1161	162	151	0,9
2.	180	1205	181	164	1,7
3.	200	1245	199	173	4,0
4.	220	1286	221	180	7,4
5.	240	1316	236	184	12,3

Lakt.	TF/min	W
2.0	166.2	183.3
3.0		
4.0	173.0	199.0
5.0		
6.0	177.1	211.9
7.0		
8.0		



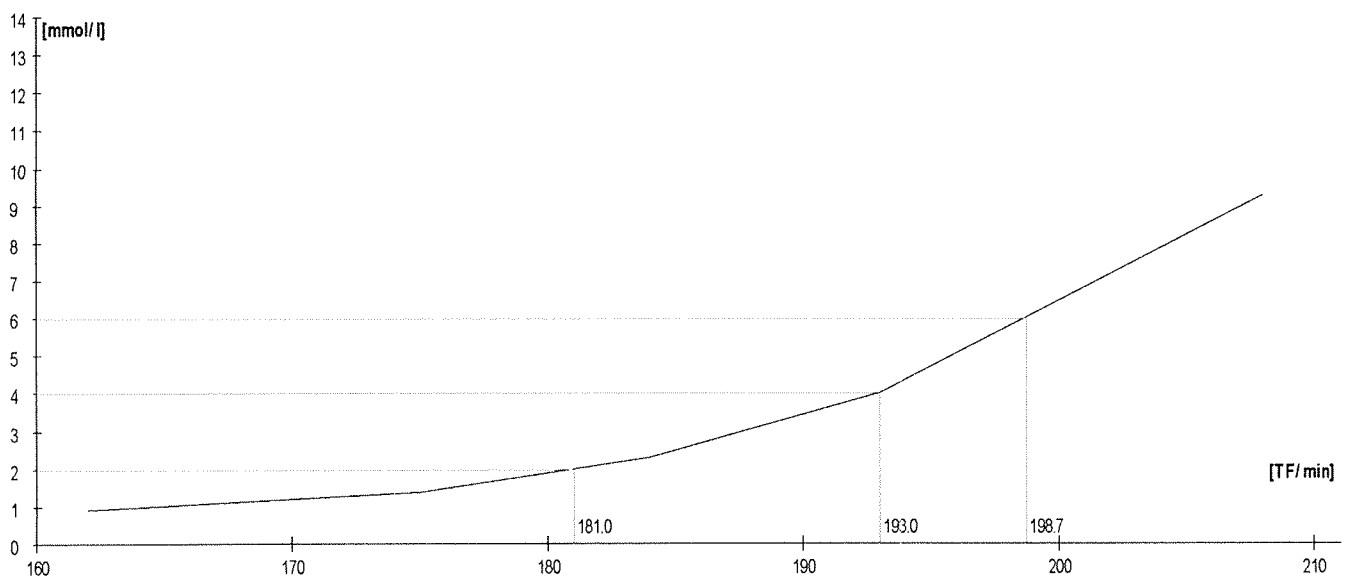
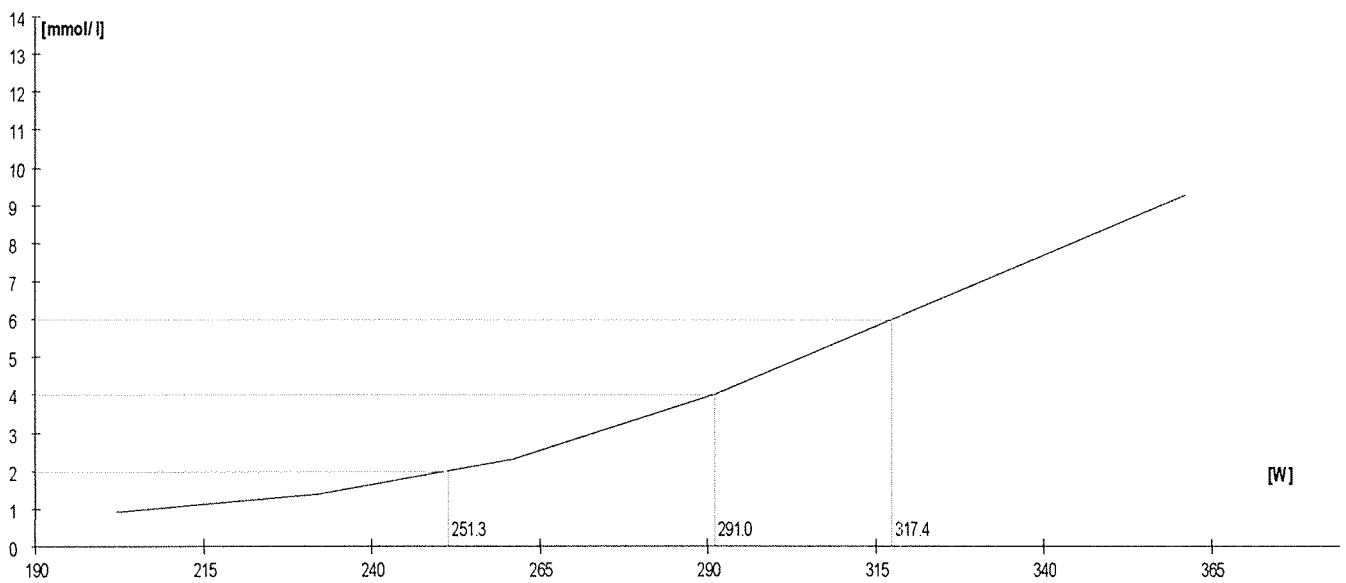
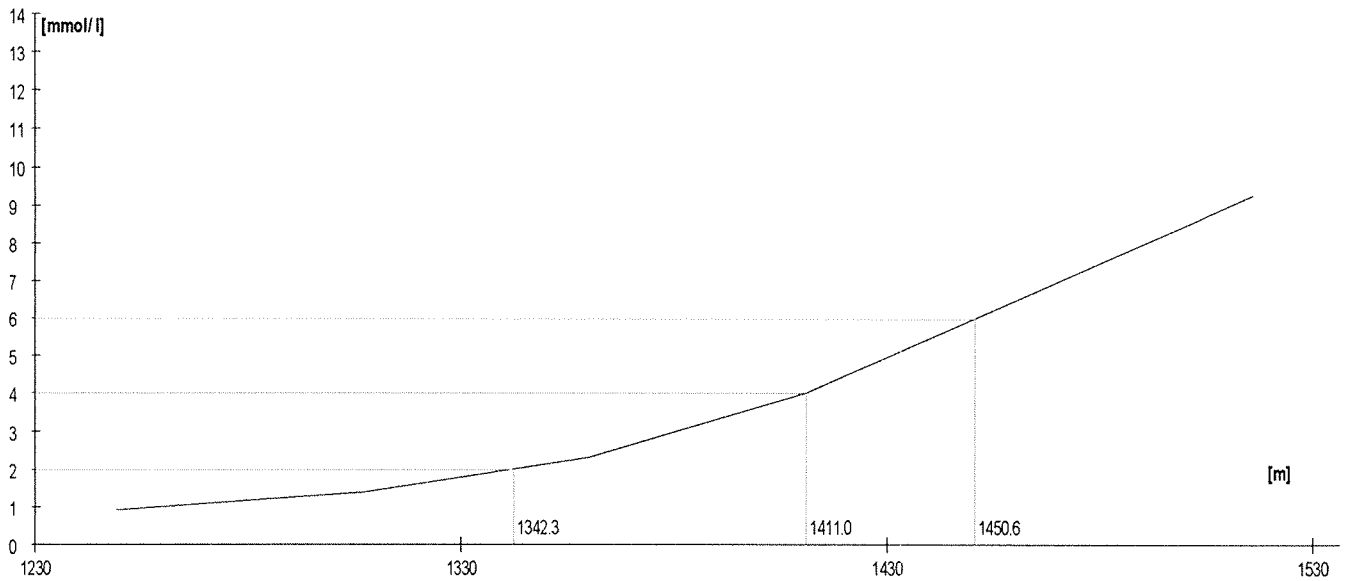
	Rozm. [W]	Výkon [m]	W	TF/min	Lakt.
1.	200	1255	205	157	1,2
2.	230	1311	234	163	1,7
3.	260	1365	264	168	2,8
4.	290	1413	293	176	4,6
5.	320	1491	344	185	9,5

Lakt.	TF/min	W
2.0	164.4	242.2
3.0		
4.0	173.3	283.3
5.0		
6.0	178.6	307.6
7.0		
8.0		



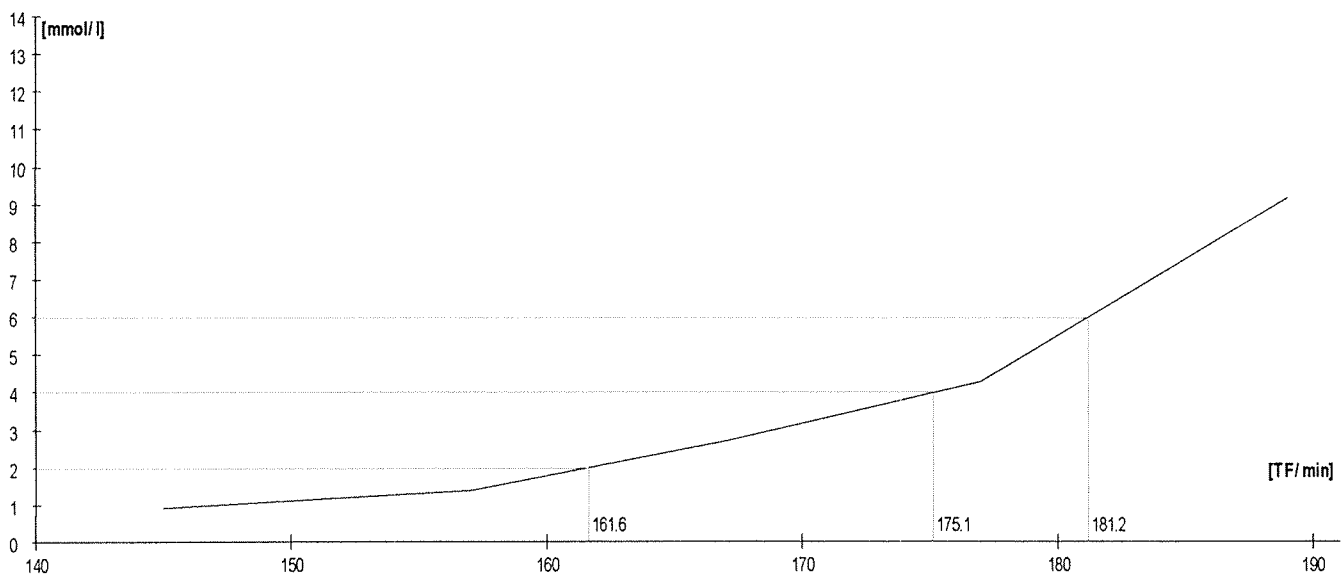
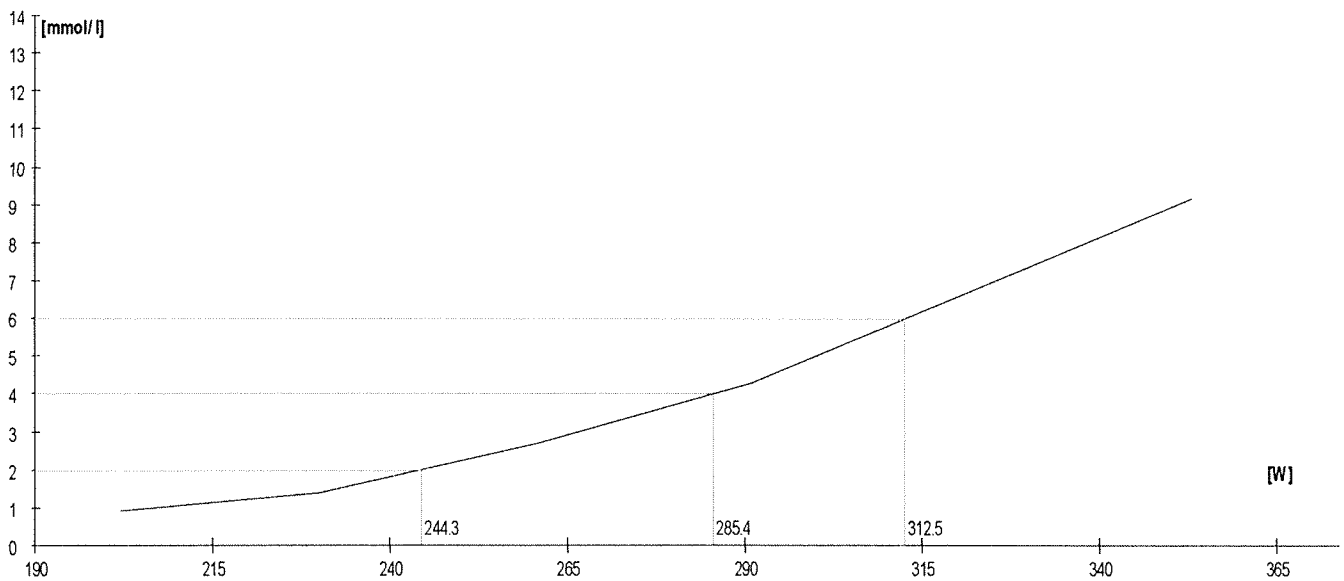
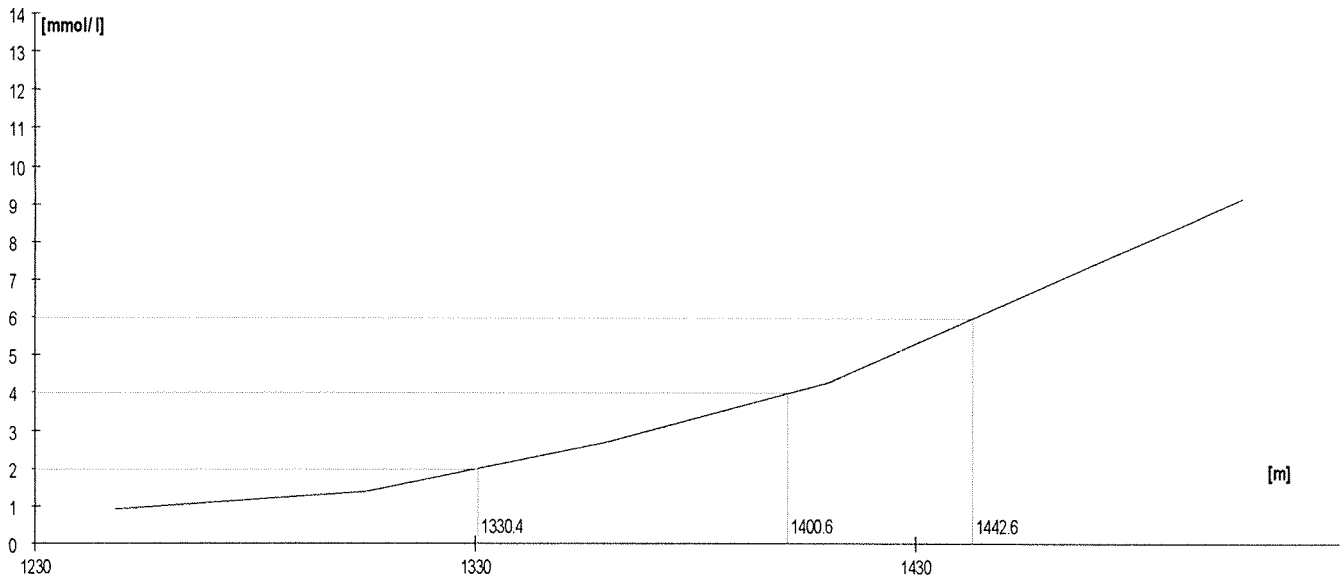
	Rozm. [W]	Výkon [m]	W	TF/min	Lakt.
1.	200	1249	202	162	0,9
2.	230	1307	232	175	1,4
3.	260	1360	261	184	2,3
4.	290	1411	291	193	4,0
5.	320	1516	361	208	9,3

Lakt.	TF/min	W
2.0	181.0	251.3
3.0		
4.0	193.0	291.0
5.0		
6.0	198.7	317.4
7.0		
8.0		



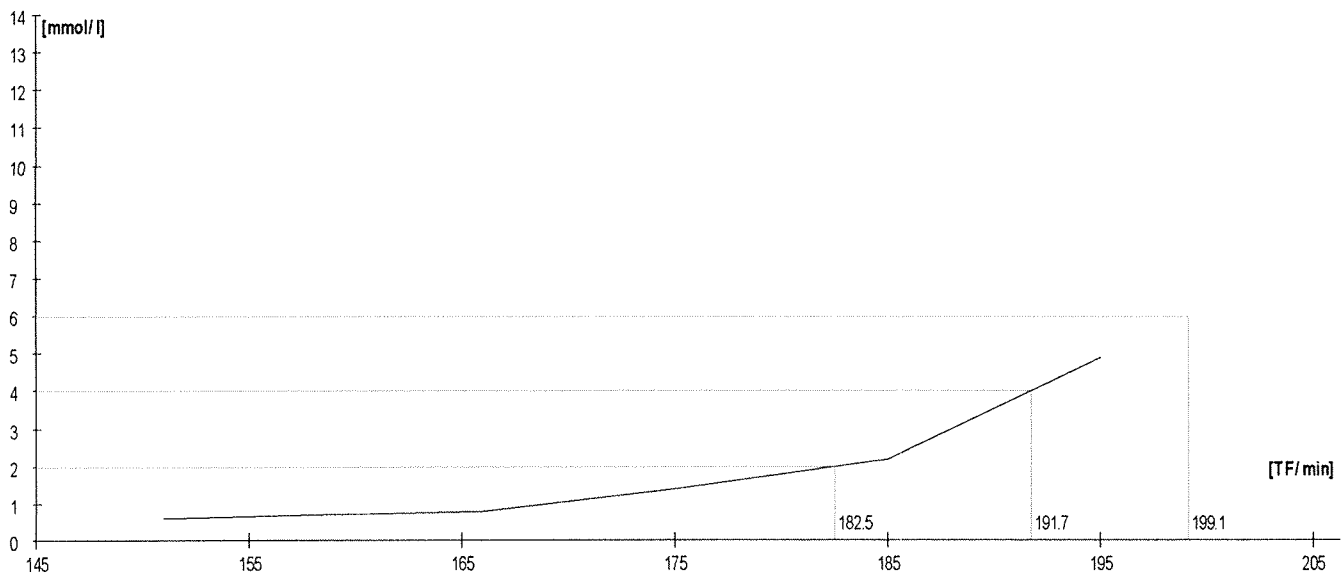
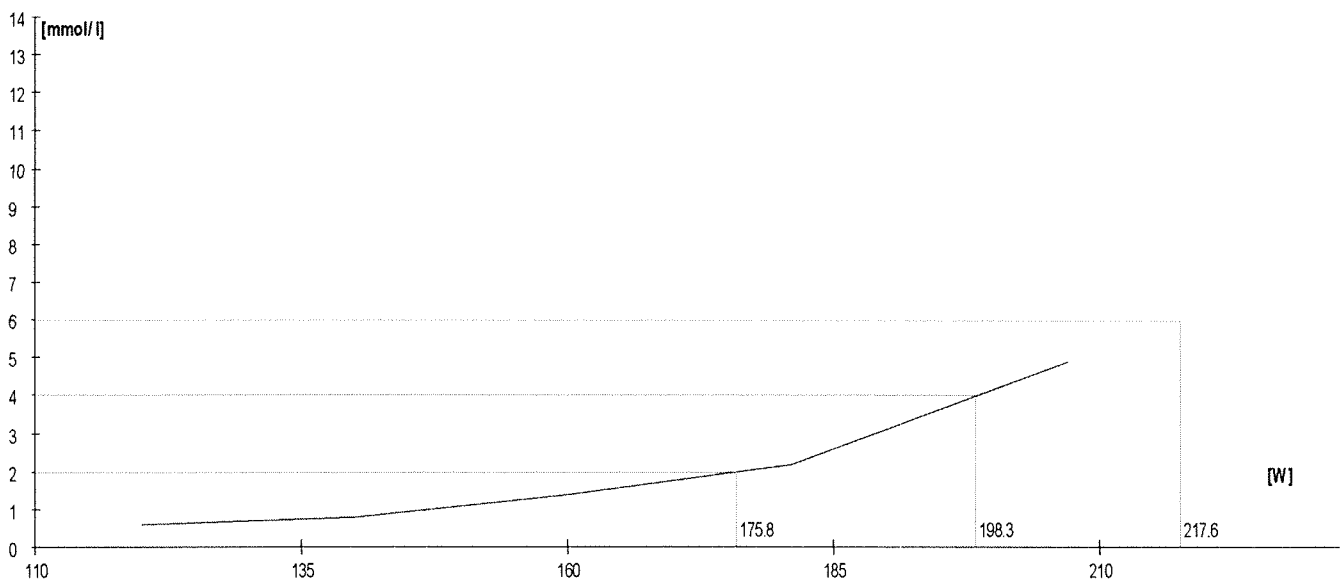
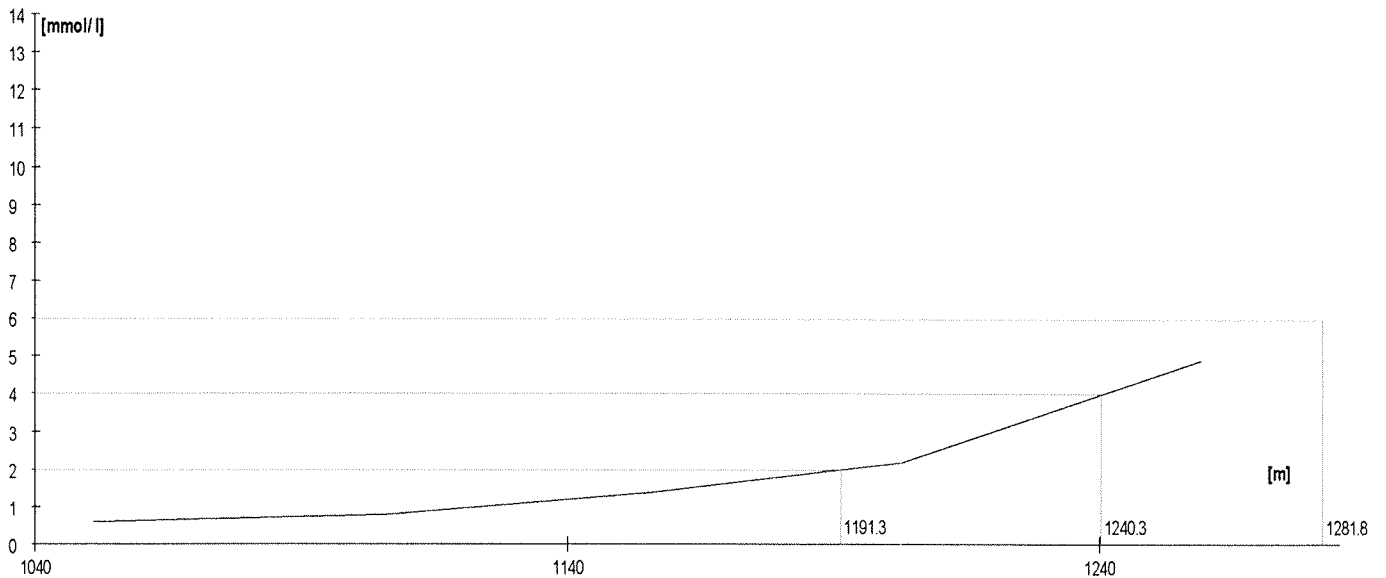
	Rozm. [W]	Výkon [m]	W	TF/min	Lakt.
1.	200	1248	202	145	0,9
2.	230	1305	230	157	1,4
3.	260	1360	261	167	2,7
4.	290	1410	291	177	4,3
5.	320	1504	353	189	9,2

Lakt.	TF/min	W
2.0	161.6	244.3
3.0		
4.0	175.1	285.4
5.0		
6.0	181.2	312.5
7.0		
8.0		



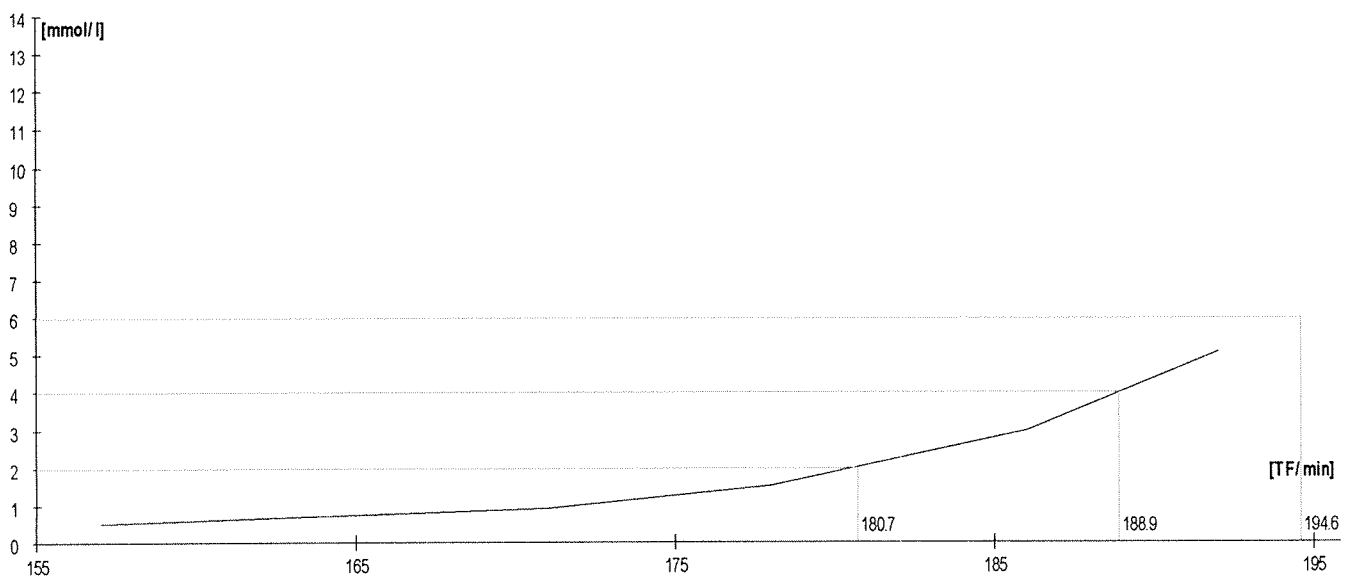
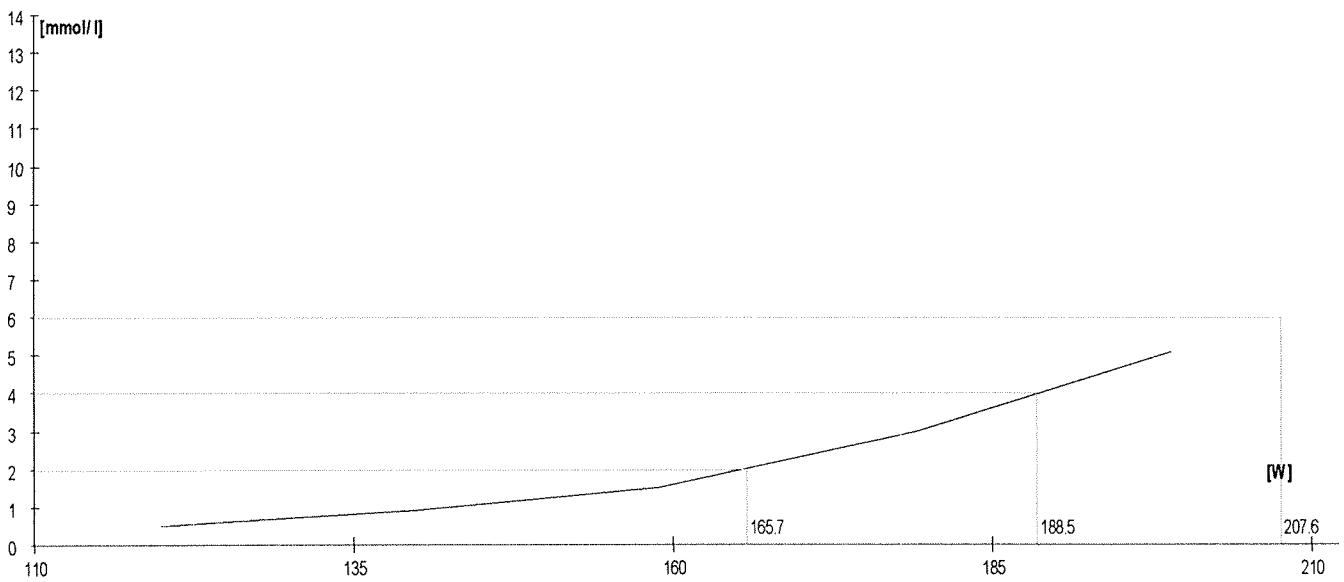
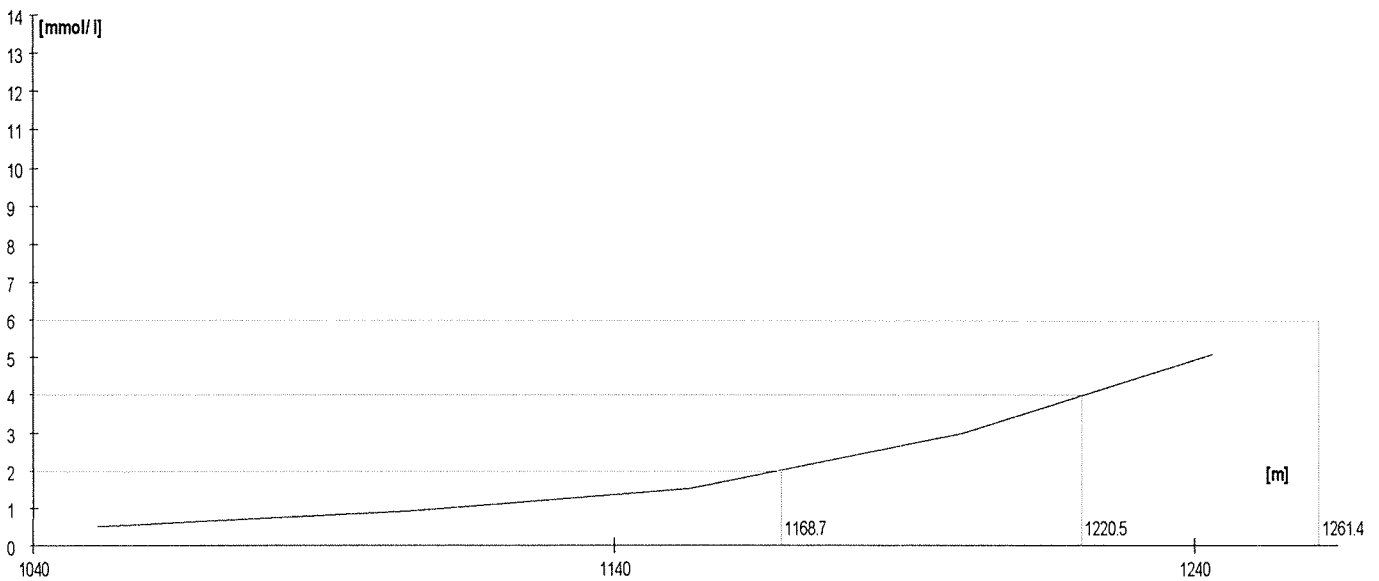
	Rozm. [W]	Výkon [m]	W	TF/min	Lakt.
1.	120	1051	120	151	0,6
2.	140	1106	140	166	0,8
3.	160	1156	160	175	1,4
4.	180	1203	181	185	2,2
5.	200	1259	207	195	4,9

Lakt.	TF/min	W
2.0	182.5	175.8
3.0		
4.0	191.7	198.3
5.0		
6.0	199.1	217.6
7.0		
8.0		



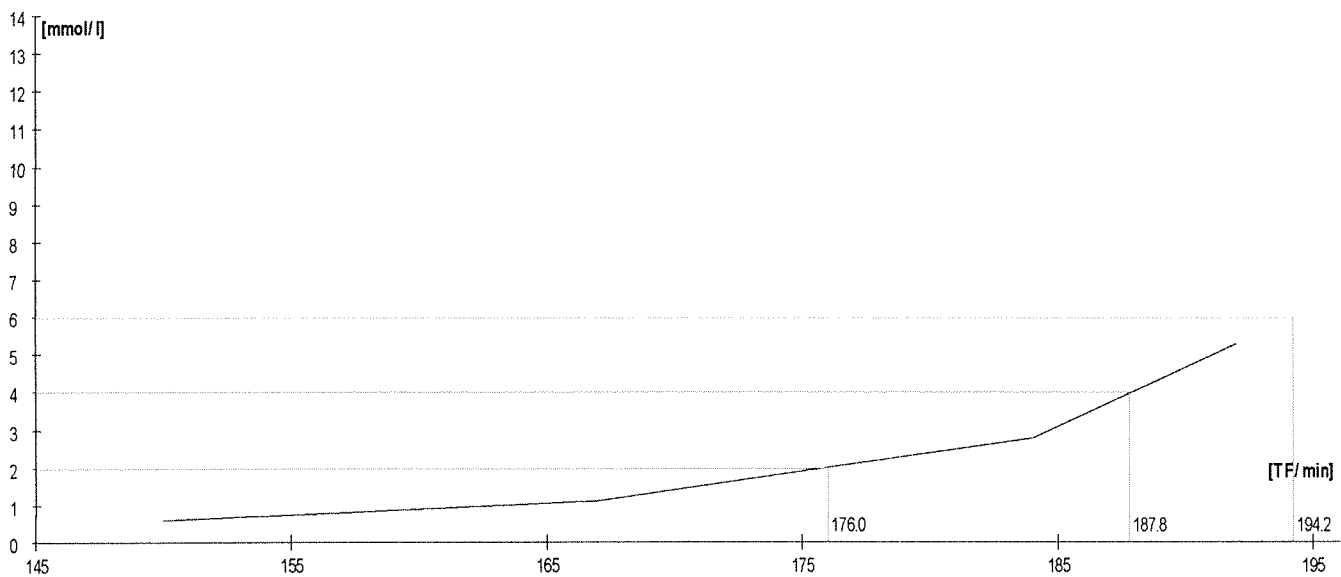
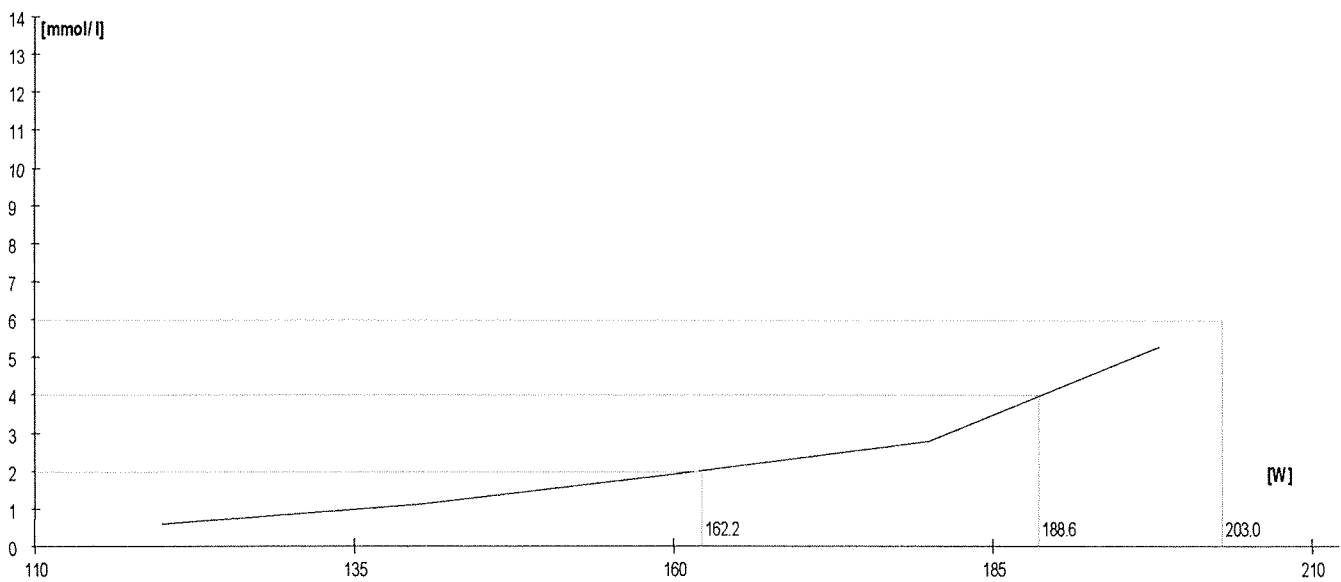
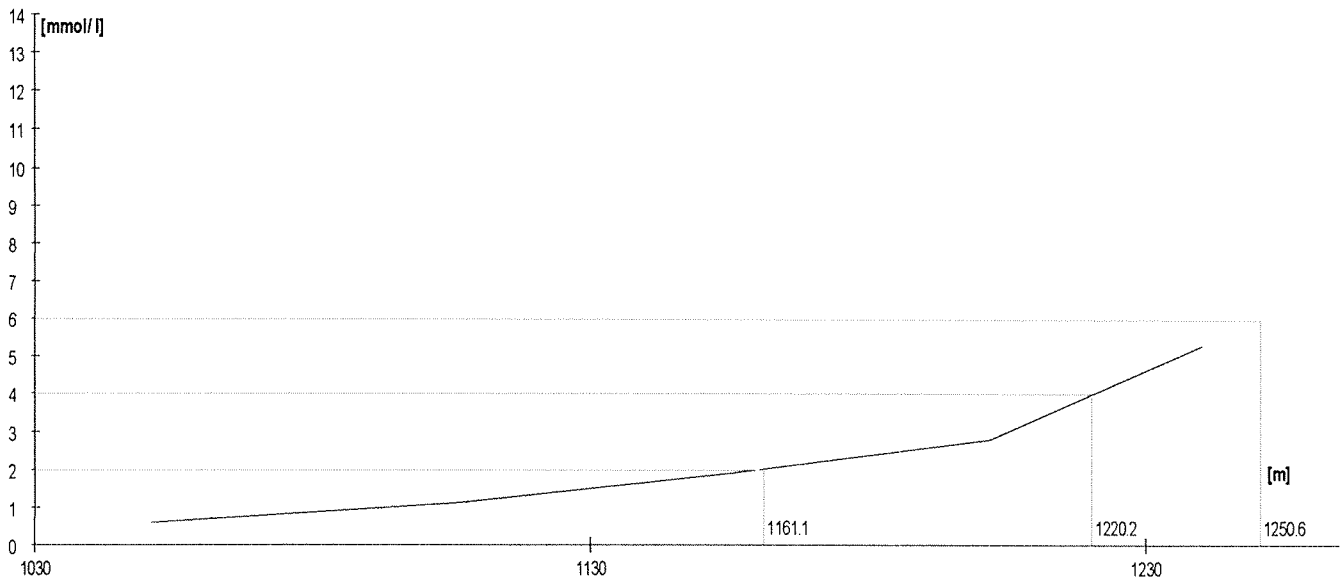
	Rozm. [W]	Výkon [m]	W	TF/min	Lakt.
1.	120	1051	120	157	0,5
2.	140	1105	140	171	0,9
3.	160	1153	159	178	1,5
4.	180	1200	179	186	3,0
5.	200	1243	199	192	5,1

Lakt.	TF/min	W
2,0	180,7	165,7
3,0		
4,0	188,9	188,5
5,0		
6,0	194,6	207,6
7,0		
8,0		



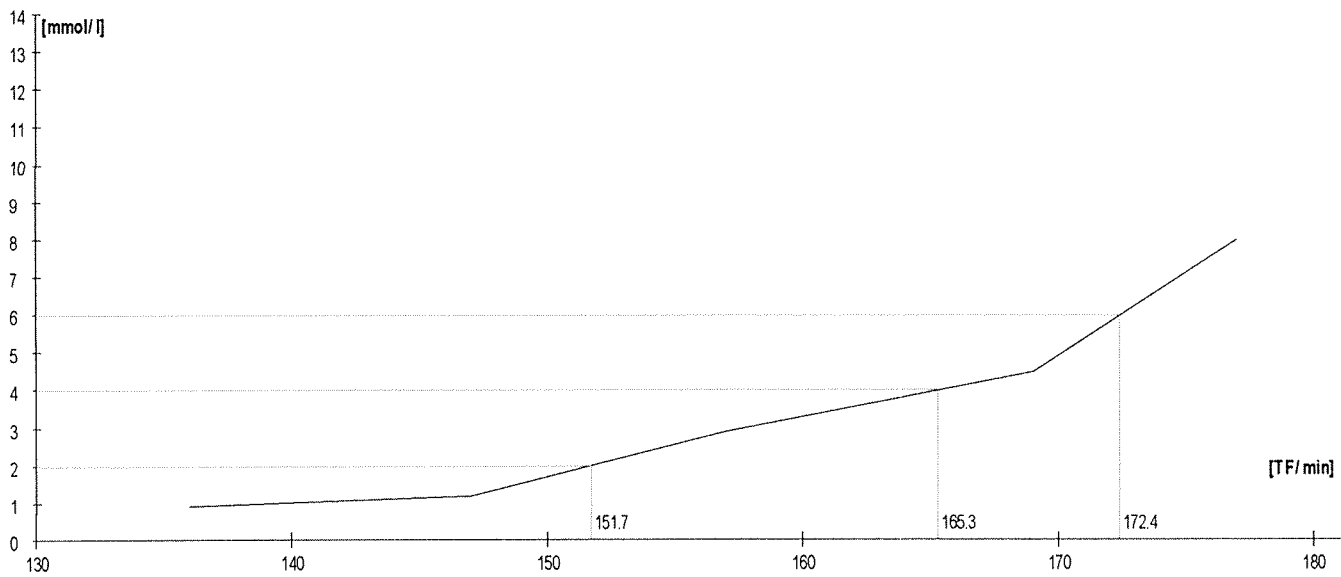
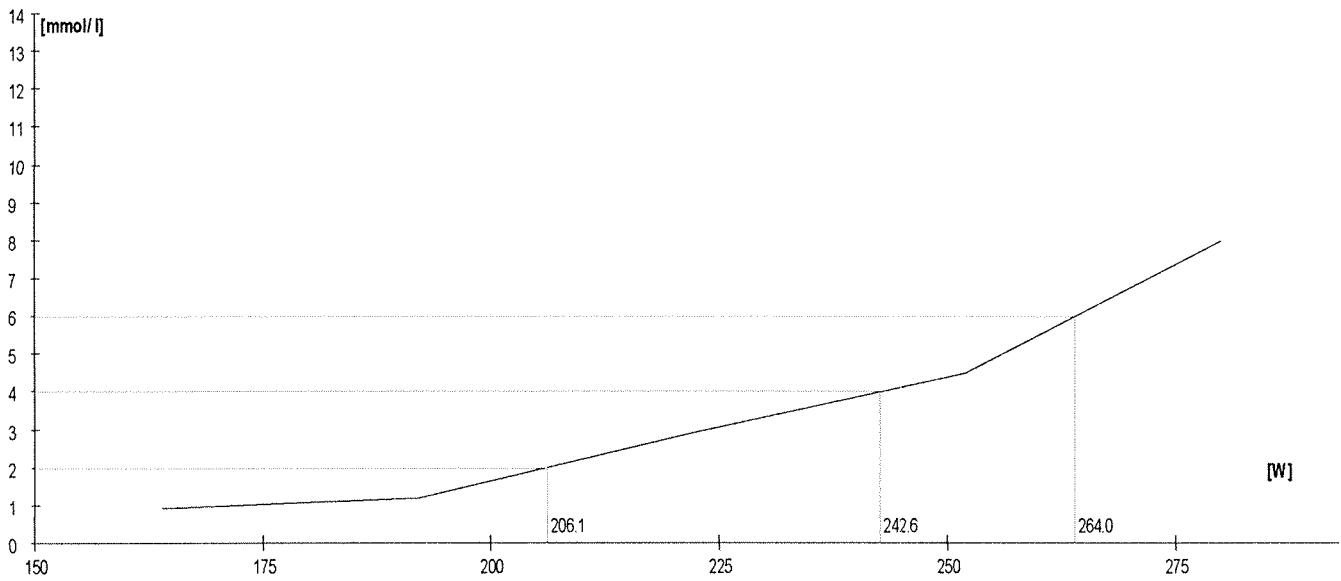
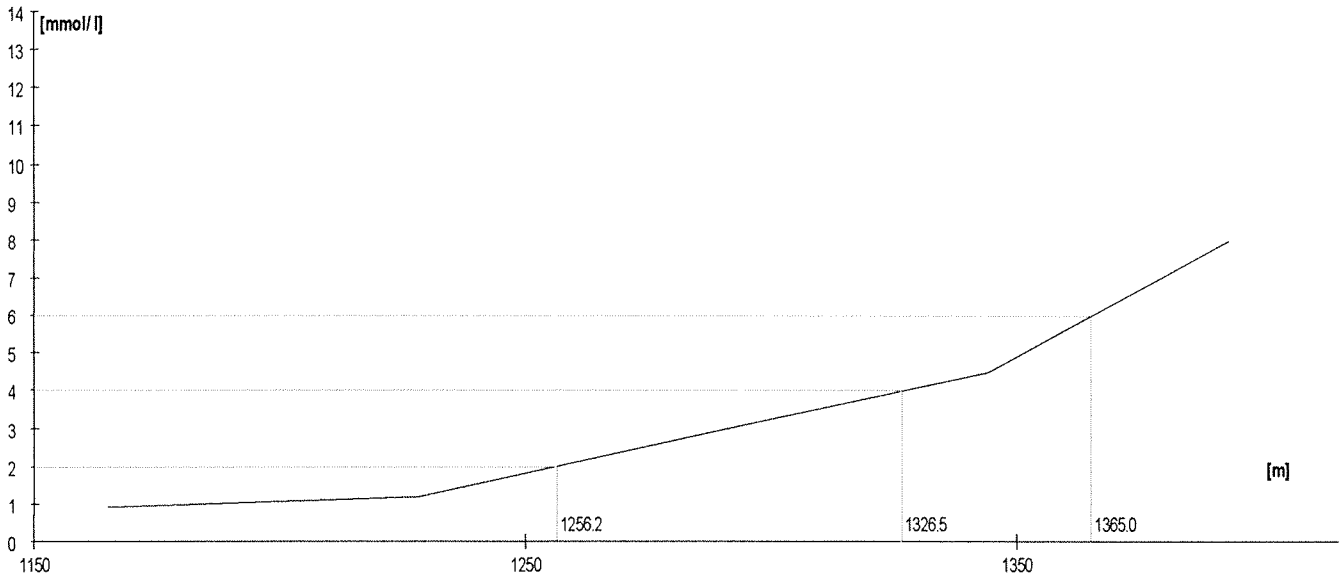
	Rozm. [W]	Výkon [m]	W	TF/min	Lakt.
1.	120	1051	120	150	0.6
2.	140	1106	140	167	1.1
3.	160	1156	160	175	1.9
4.	180	1202	180	184	2.8
5.	200	1240	198	192	5.3

Lakt.	TF/min	W
2.0	176.0	162.2
3.0		
4.0	187.8	188.6
5.0		
6.0	194.2	203.0
7.0		
8.0		



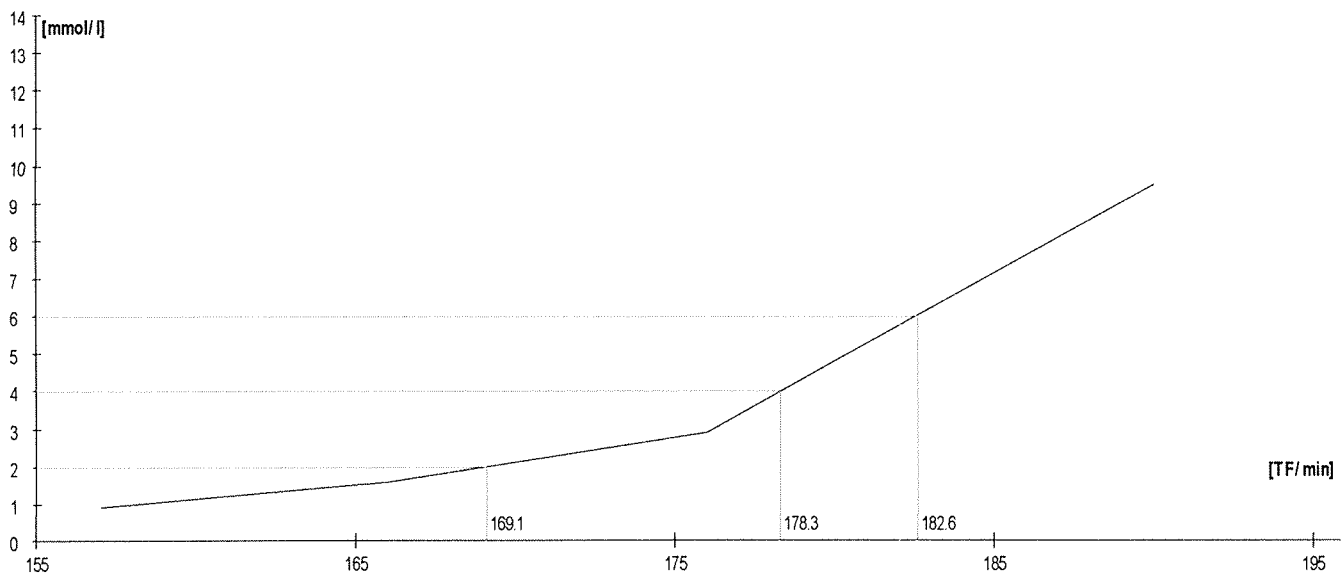
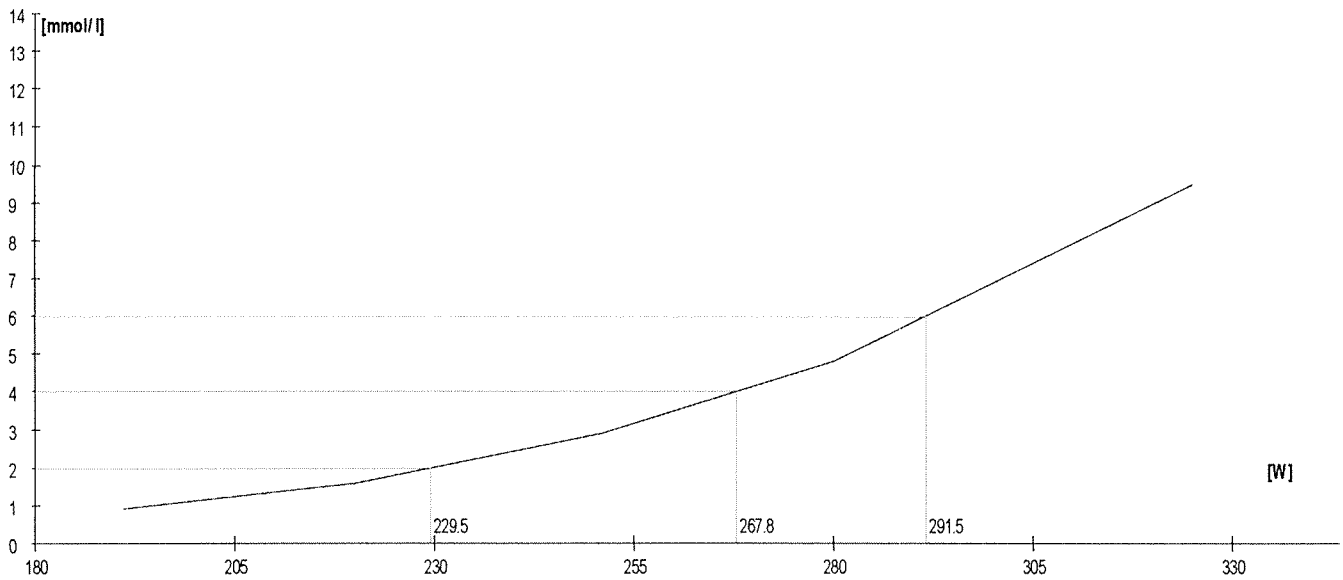
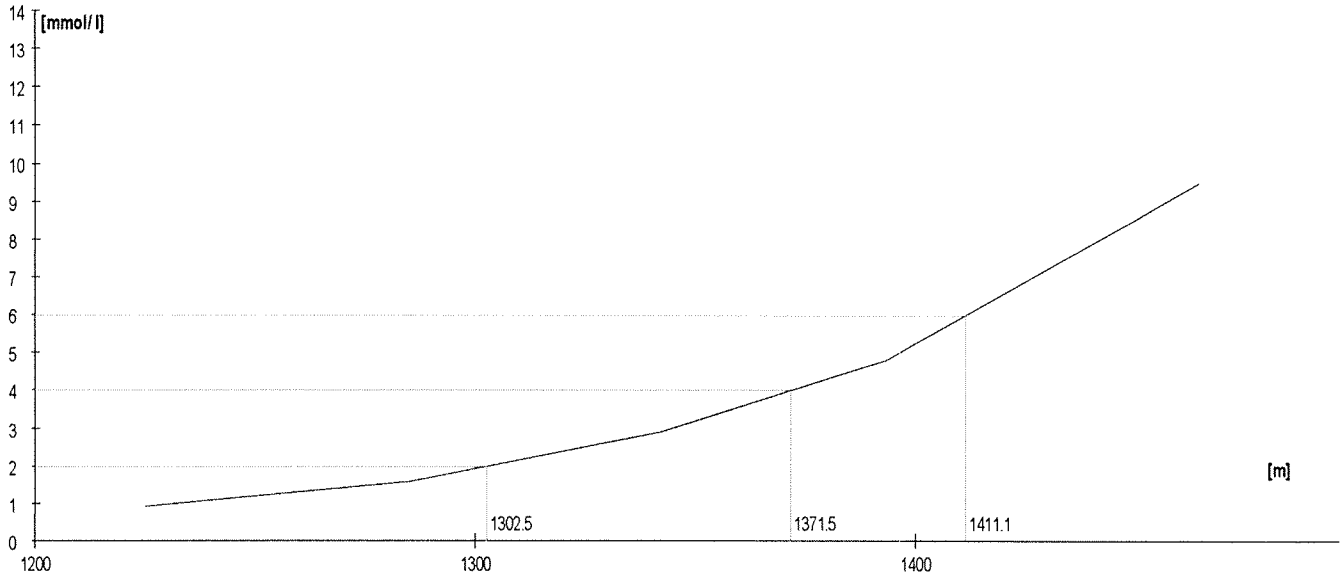
	Rozm. [W]	Výkon [m]	W	TF/min	Lakt.
1.	160	1165	164	136	0,9
2.	190	1228	192	147	1,2
3.	220	1288	222	157	2,9
4.	250	1344	252	169	4,5
5.	280	1393	280	177	8,0

Lakt.	TF/min	W
2.0	151.7	206.1
3.0		
4.0	165.3	242.6
5.0		
6.0	172.4	264.0
7.0		
8.0		



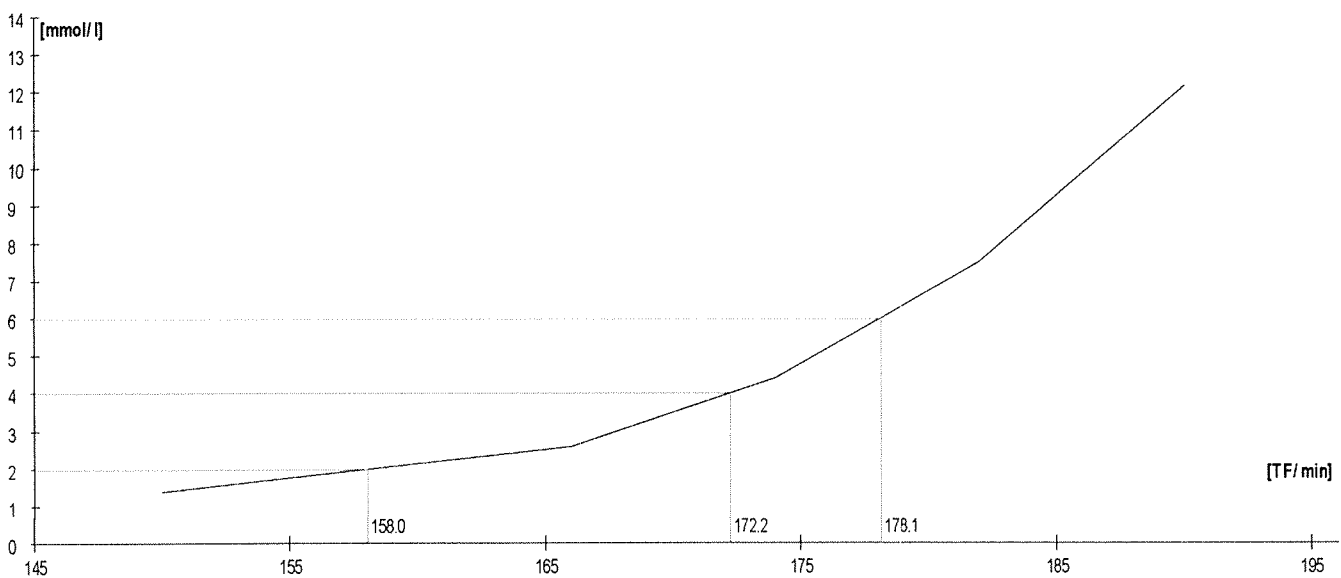
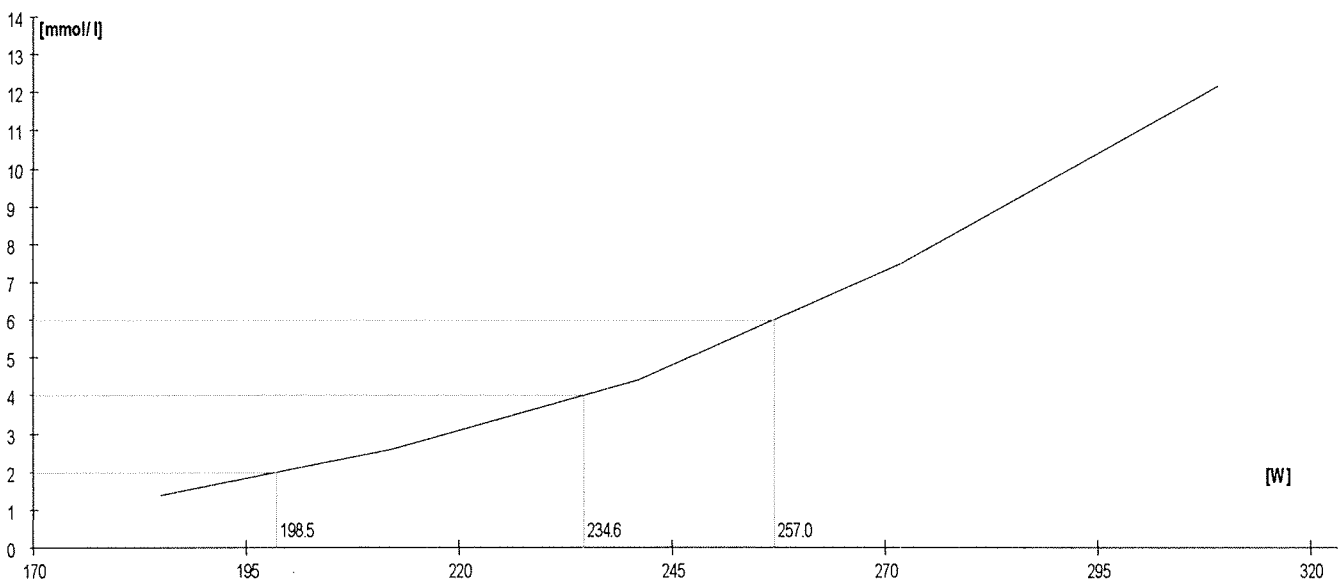
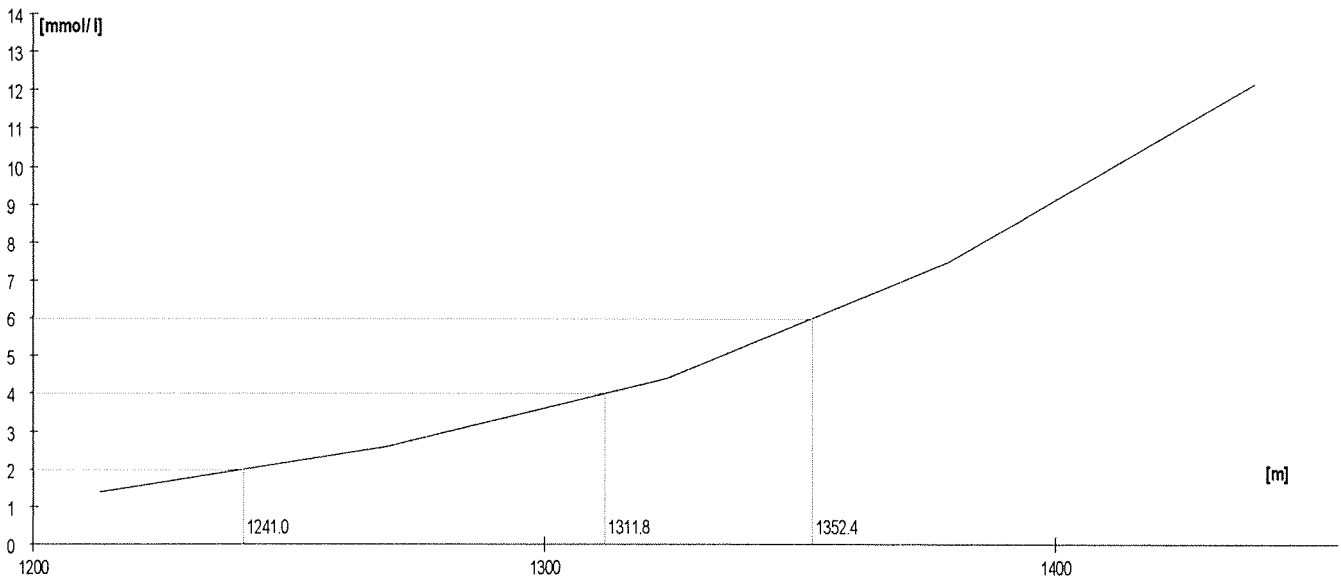
	Rozm. [W]	Výkon [m]	W	TF/min	Lakt.
1.	190	1225	191	157	0,9
2.	220	1285	220	166	1,6
3.	250	1342	251	176	2,9
4.	280	1393	280	180	4,8
5.	310	1464	325	190	9,5

Lakt.	TF/min	W
2.0	169.1	229.5
3.0		
4.0	178.3	267.8
6.0		
6.0	182.6	291.5
7.0		
8.0		



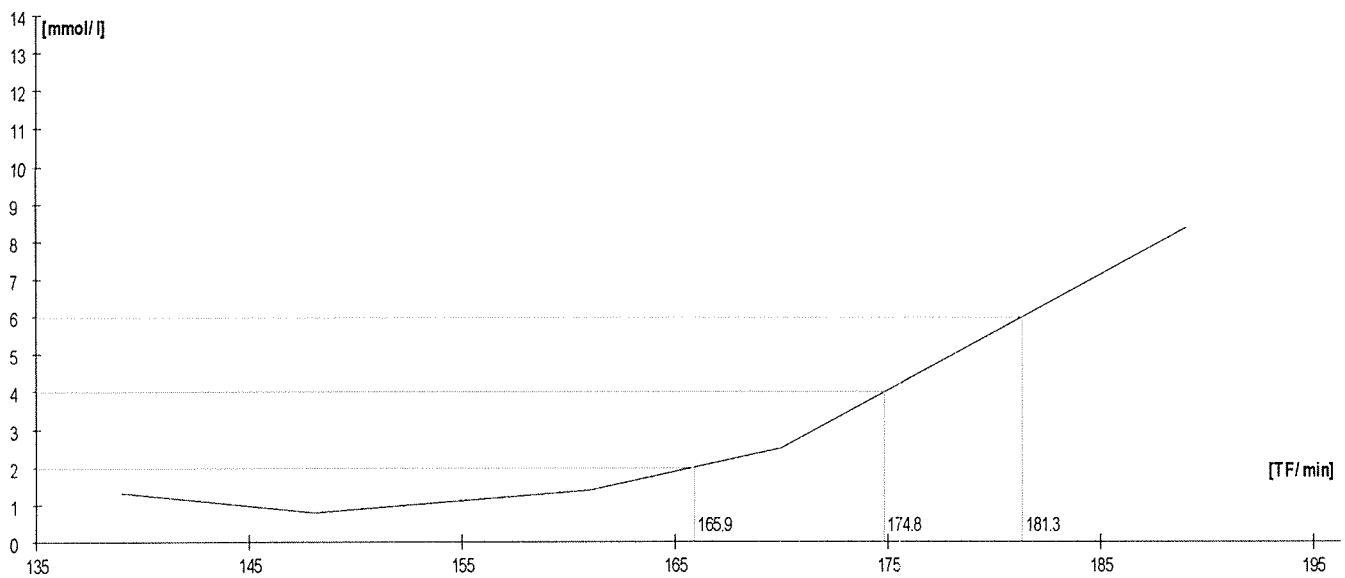
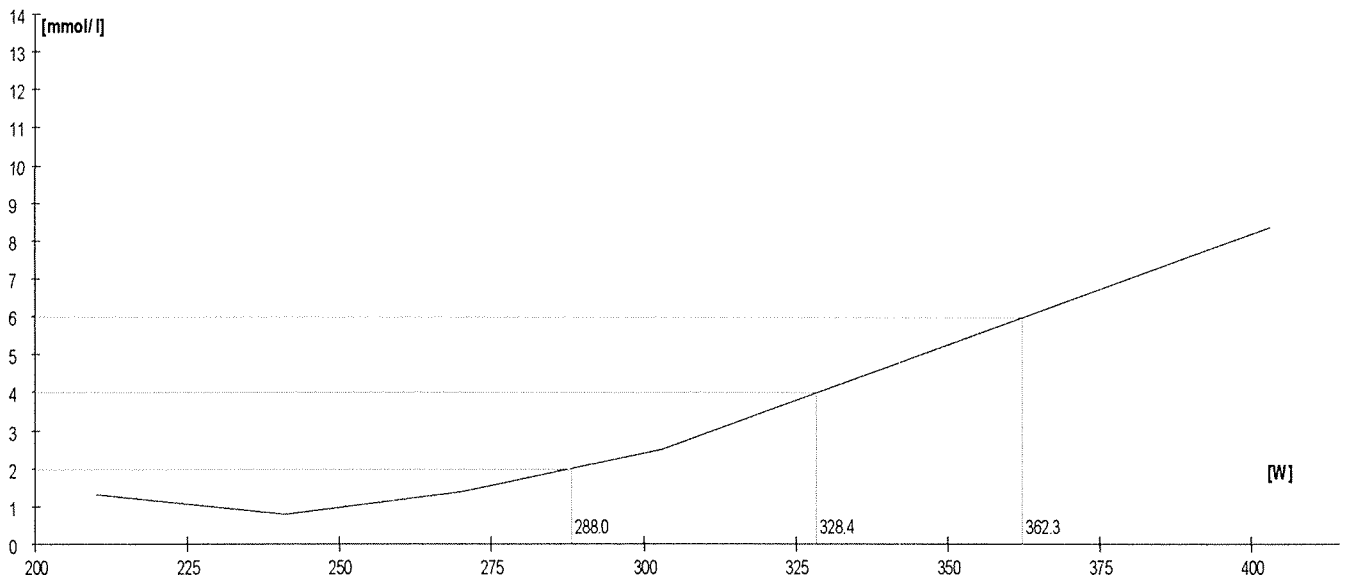
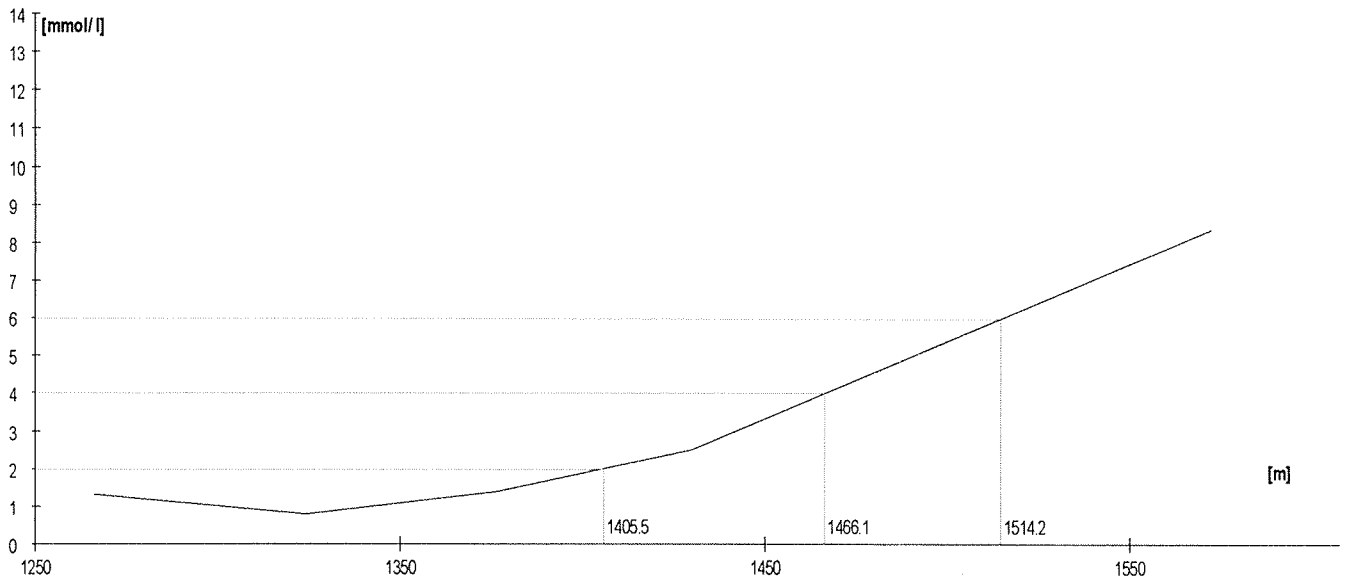
	Rozm. [W]	Výkon [m]	W	TF/min	Lakt.
1.	180	1213	185	150	1,4
2.	210	1269	212	166	2,6
3.	240	1324	241	174	4,4
4.	270	1379	272	182	7,5
5.	300	1439	309	190	12,2

Lakt.	TF/min	W
2.0	158.0	198.5
3.0		
4.0	172.2	234.6
5.0		
6.0	178.1	257.0
7.0		
8.0		



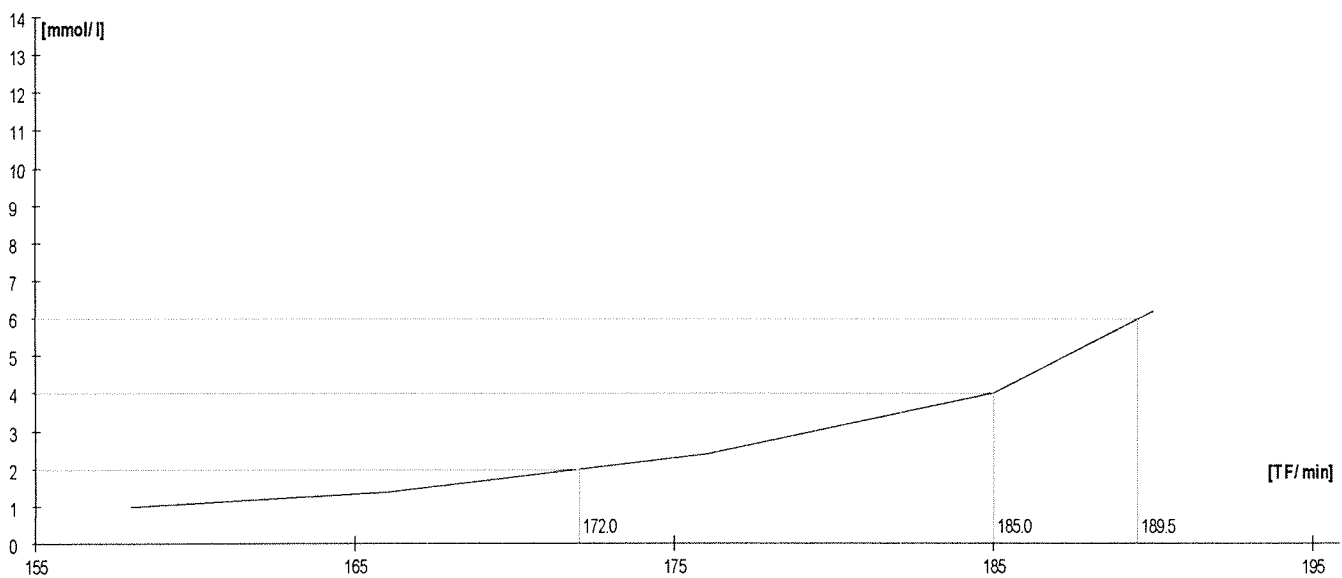
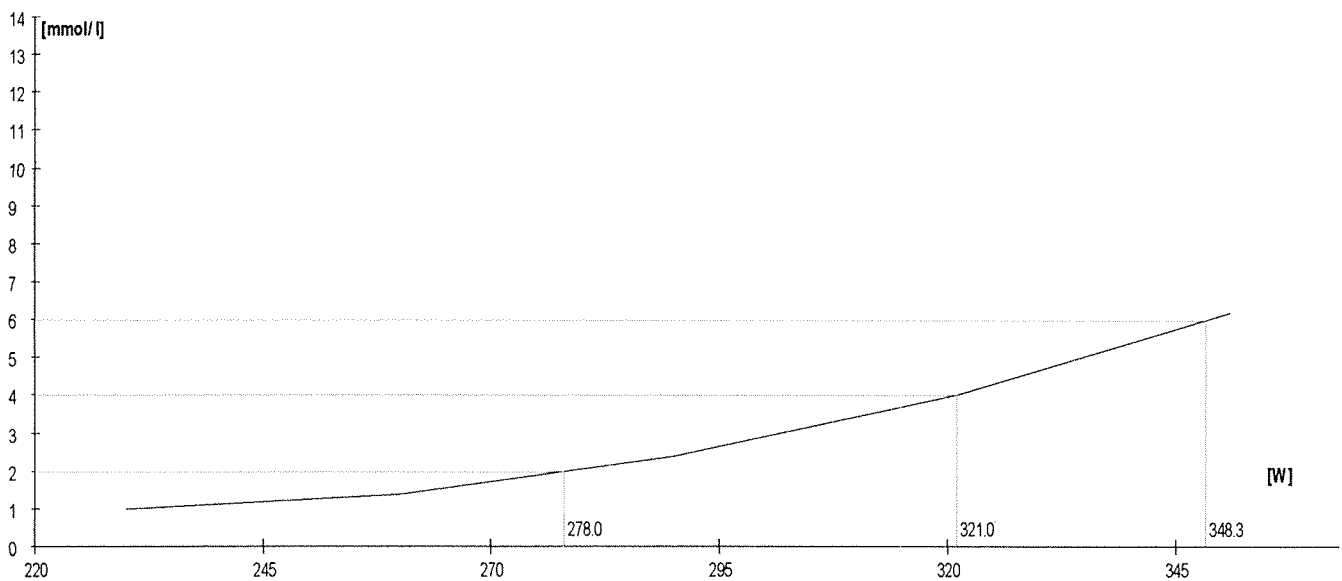
	Rozm. [W]	Výkon [m]	W	TF/min	Lakt.
1.	210	1266	210	139	1.3
2.	240	1324	241	148	0.8
3.	270	1376	270	161	1.4
4.	300	1430	303	170	2.5
5.	max	1572	403	189	8.4

Lakt.	TF/min	W
2.0	165.9	288.0
3.0		
4.0	174.8	328.4
5.0		
6.0	181.3	362.3
7.0		
8.0		



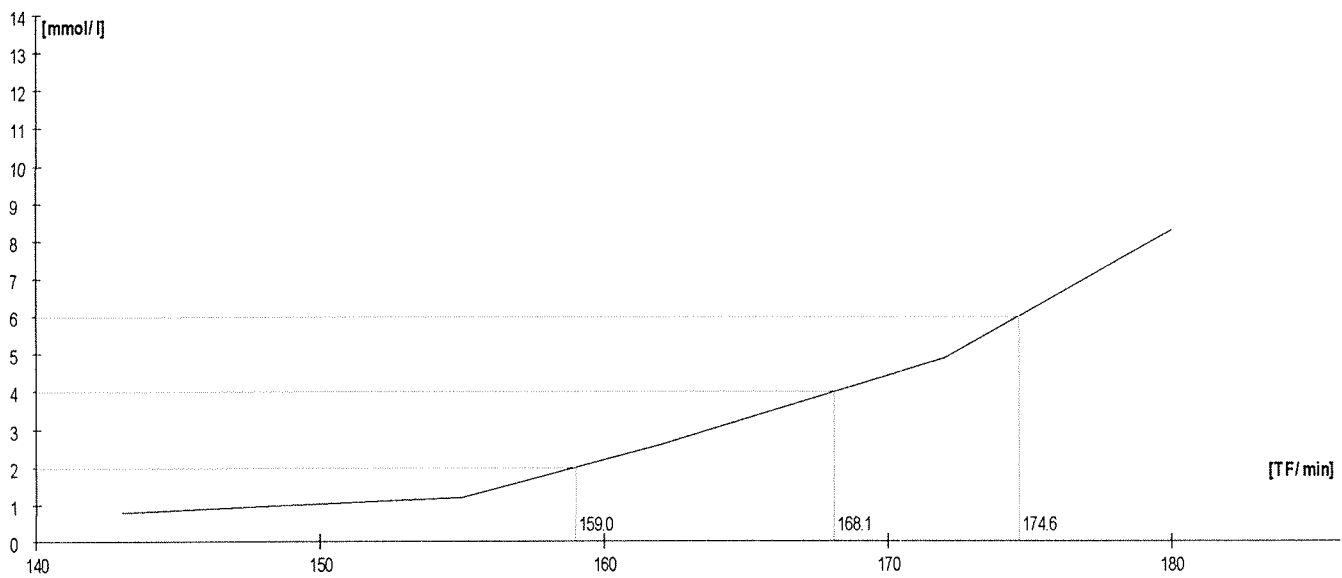
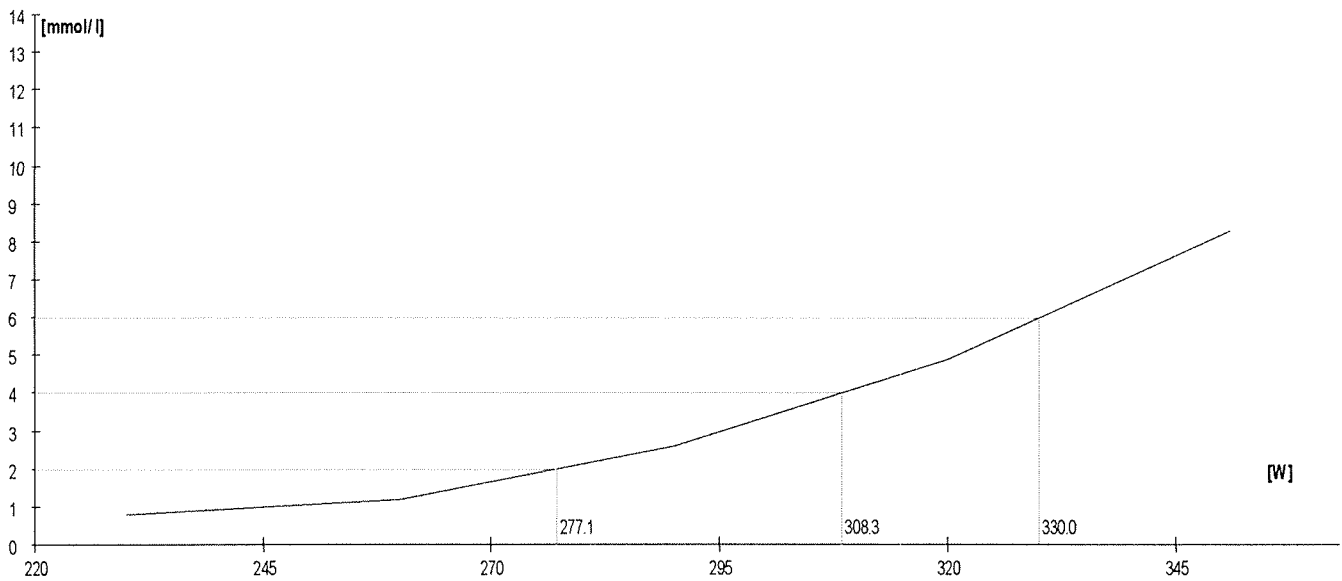
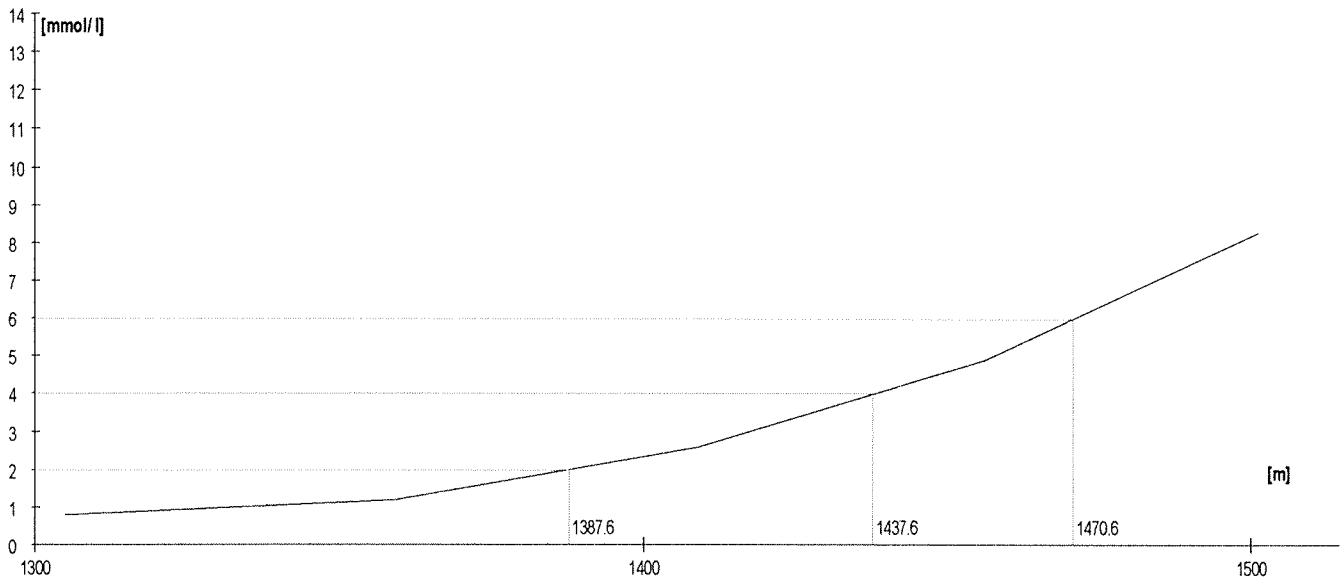
	Rozm. [W]	Výkon [m]	W	TF/min	Lakt.
1.	230	1340	230	158	1,0
2.	260	1359	260	166	1,4
3.	290	1409	290	176	2,4
4.	320	1457	321	185	4
5.	350	1501	351	190	6,2

Lakt.	TF/min	W
2.0	172.0	278.0
3.0		
4.0	185.0	321.0
5.0		
6.0	189.5	348.3
7.0		
8.0		



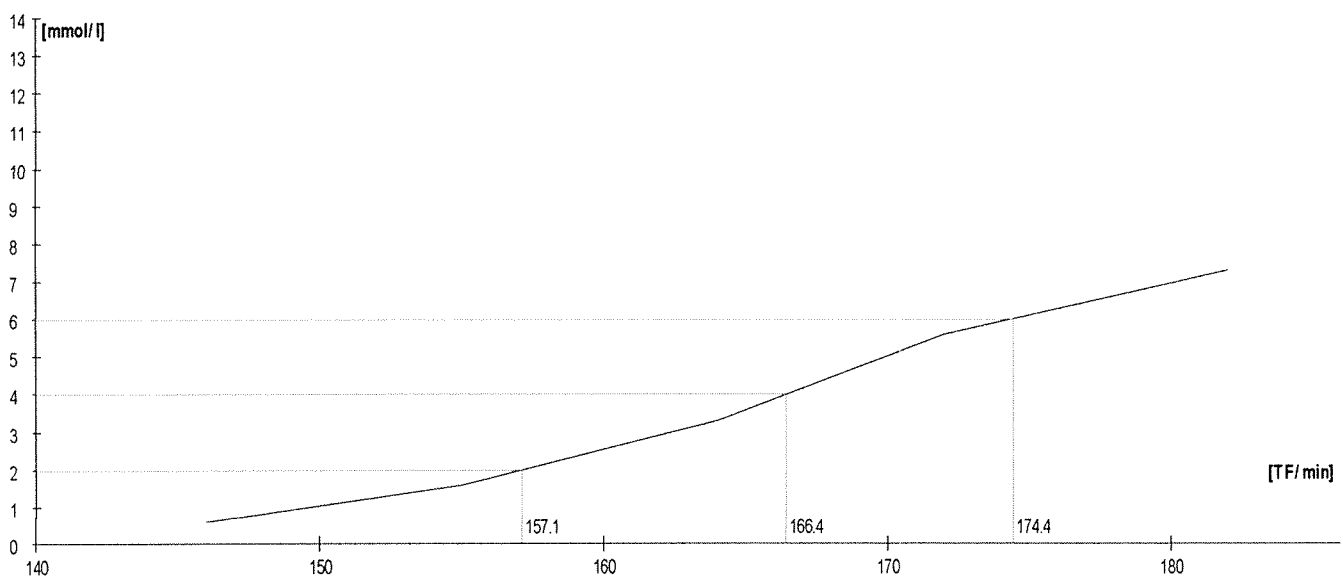
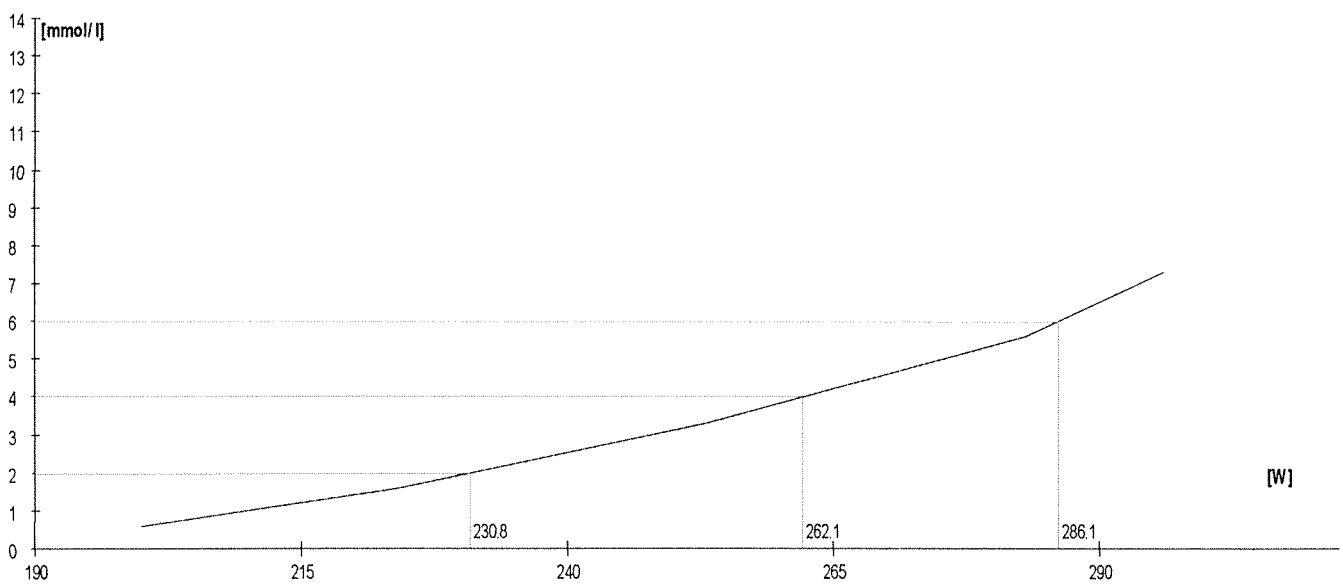
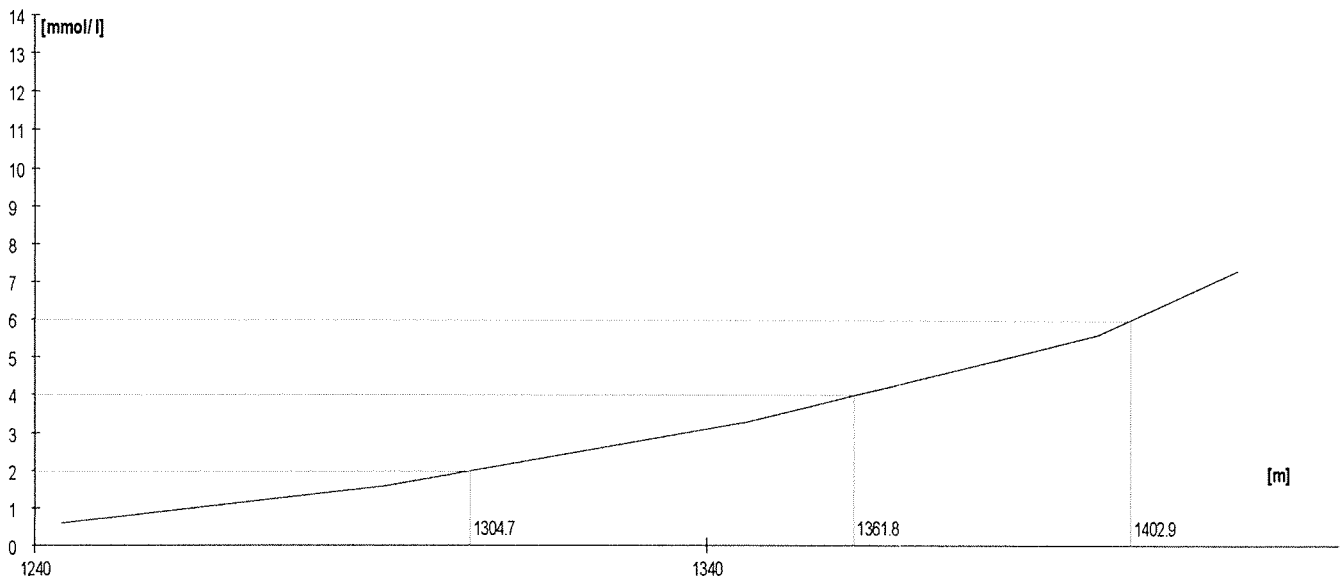
	Rozm. [W]	Výkon [m]	W	TF/min	Lakt.
1.	230	1305	230	143	0,8
2.	260	1359	260	155	1,2
3.	290	1409	290	162	2,6
4.	320	1456	320	172	4,9
5.	350	1501	351	180	8,3

Lakt.	TF/min	W
2.0	159.0	277.1
3.0		
4.0	168.1	308.3
5.0		
6.0	174.6	330.0
7.0		
8.0		



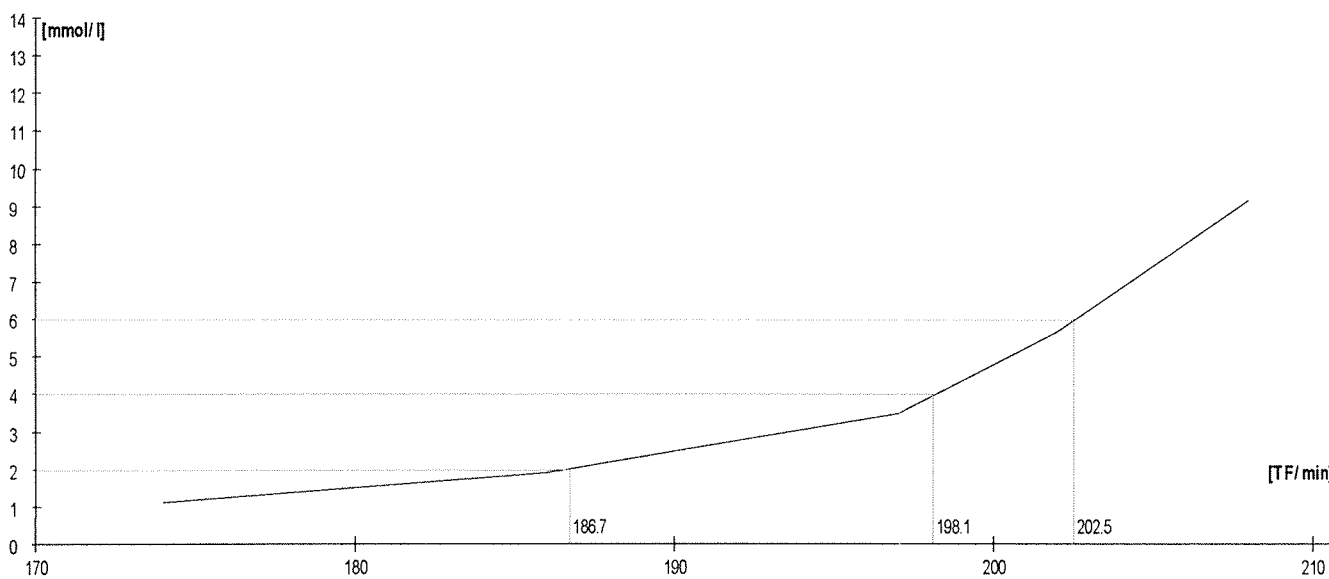
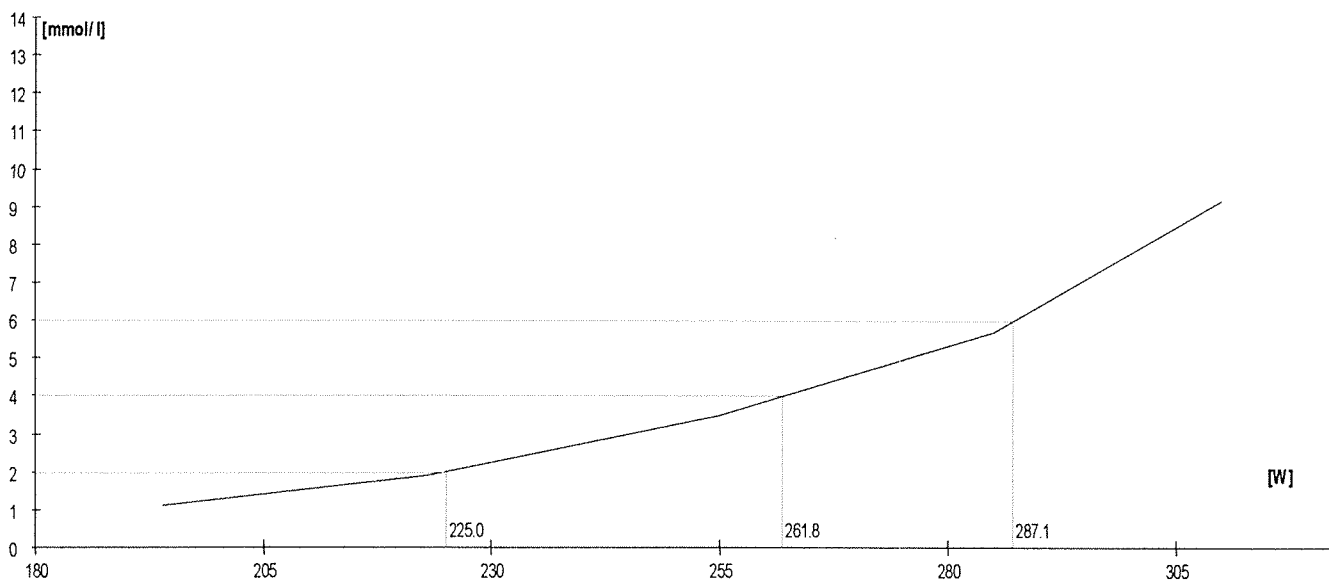
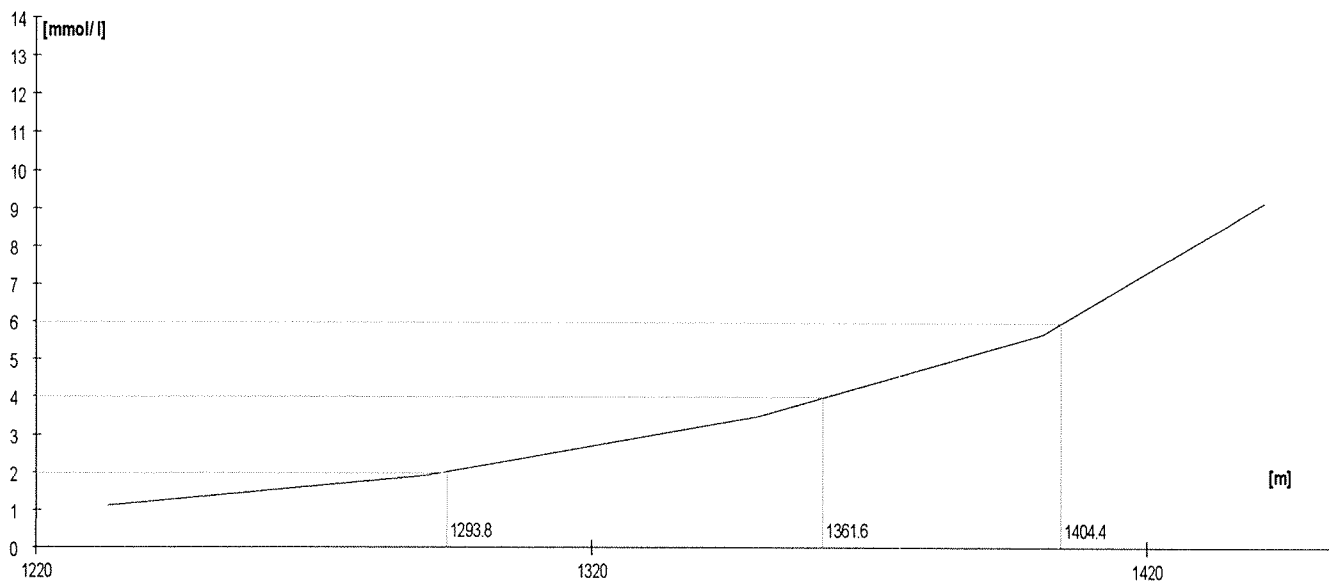
	Rozm. [W]	Výkon [m]	W	TF/min	Lakt.
1.	190	1244	200	146	0,6
2.	220	1292	224	155	1,6
3.	250	1346	253	164	3,3
4.	280	1398	283	172	5,6
5.	310	1419	296	182	7,3

Lakt.	TF/min	W
2.0	157.1	230.8
3.0		
4.0	166.4	262.1
5.0		
6.0	174.4	286.1
7.0		
8.0		



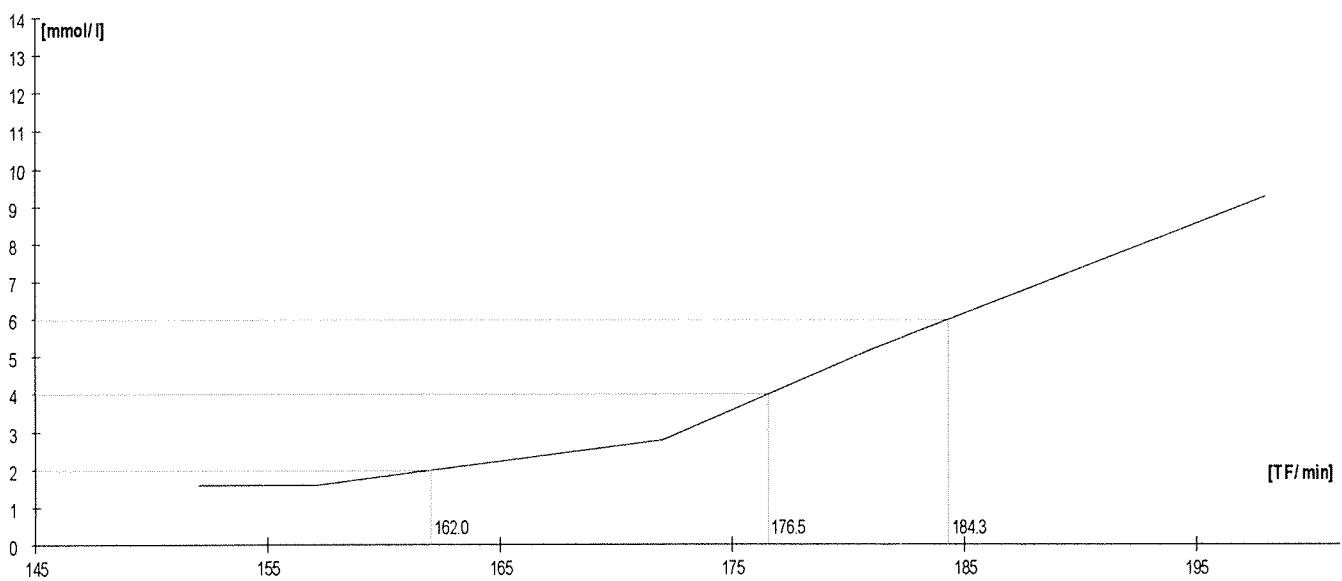
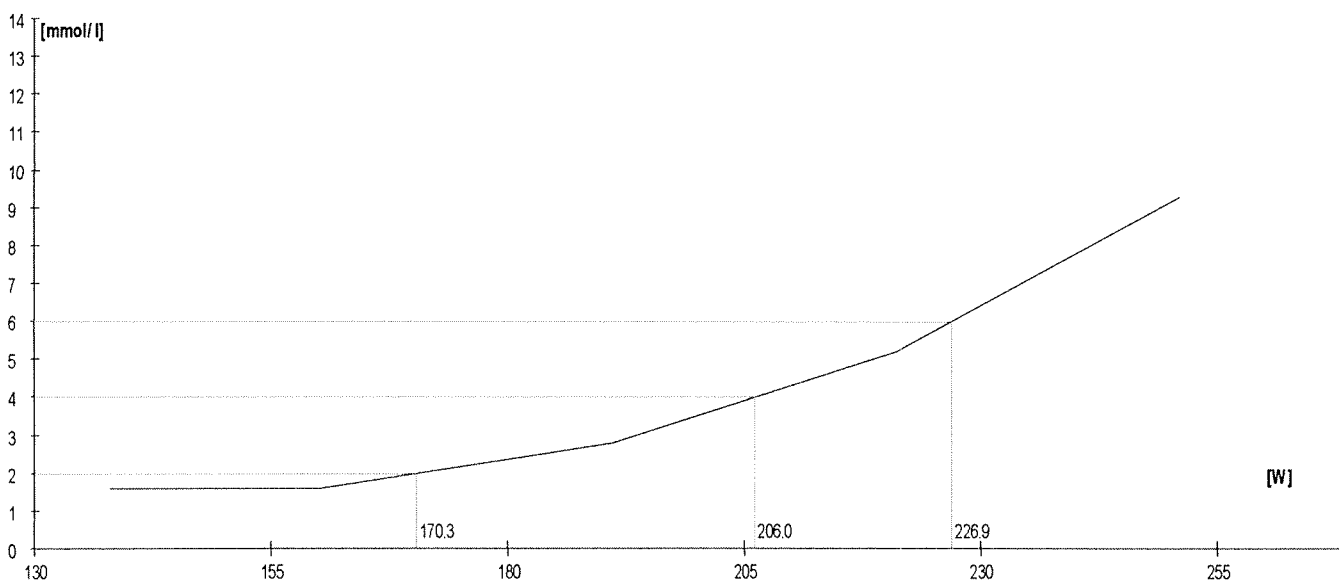
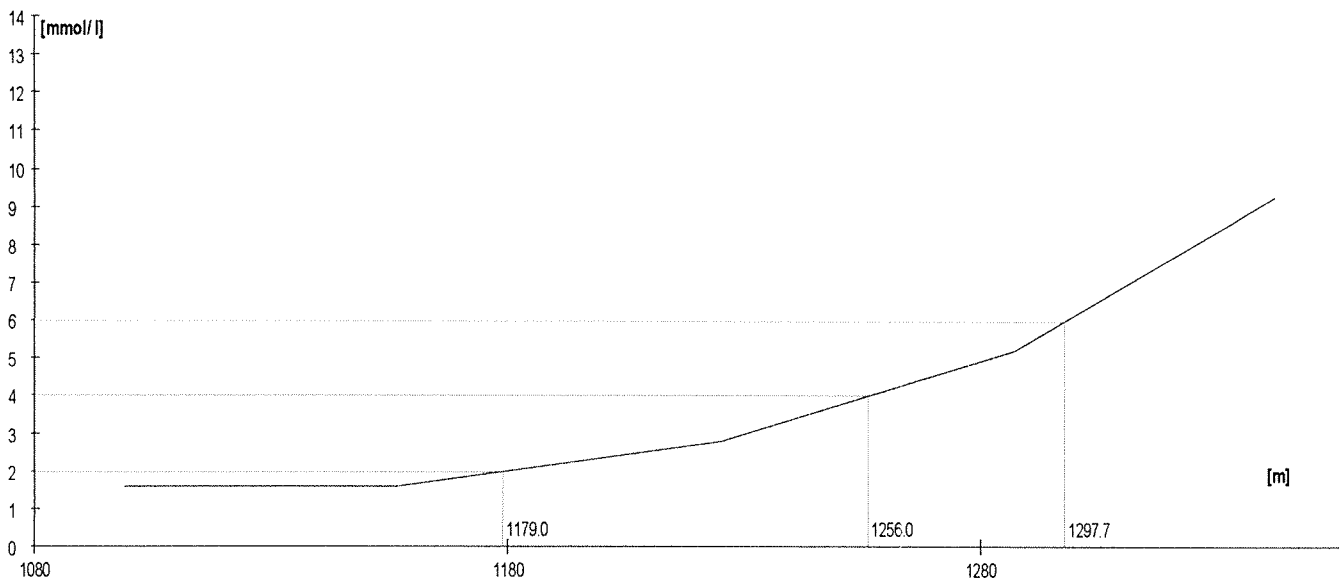
	Rozm. [W]	Výkon [m]	W	TF/min	Lakt.
1.	190	1233	194	174	1,1
2.	220	1290	223	186	1,9
3.	250	1350	255	197	3,5
4.	280	1401	285	202	5,7
5.	310	1441	310	208	9,2

Lakt.	TF/min	W
2.0	186.7	225.0
3.0		
4.0	198.1	261.8
5.0		
6.0	202.5	287.1
7.0		
8.0		



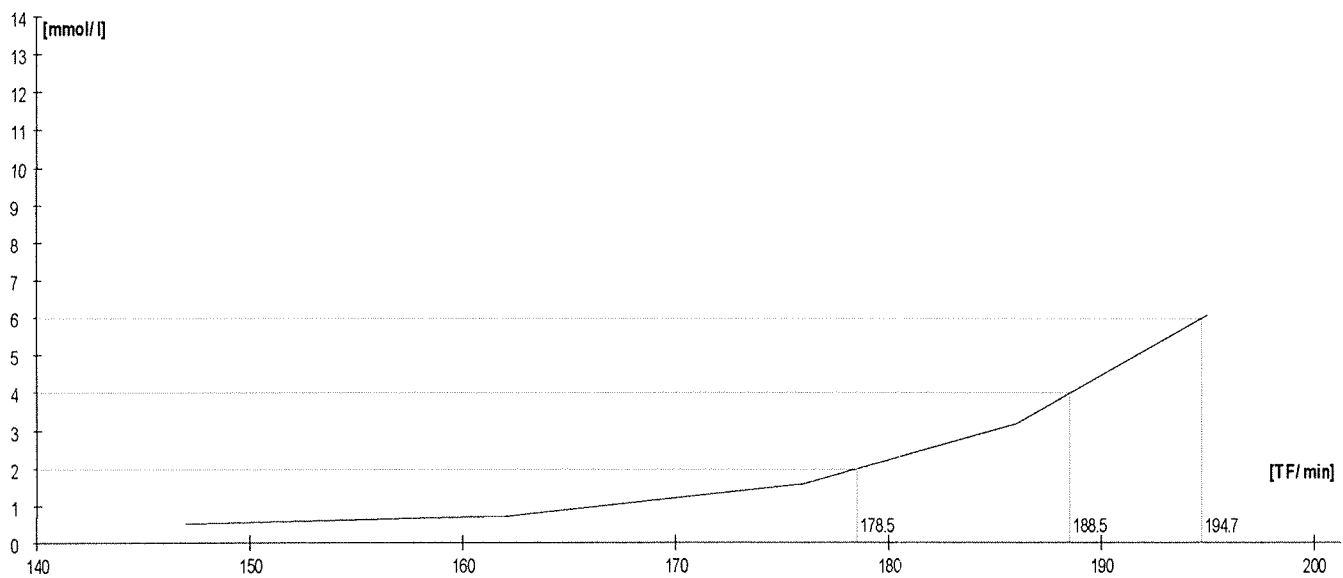
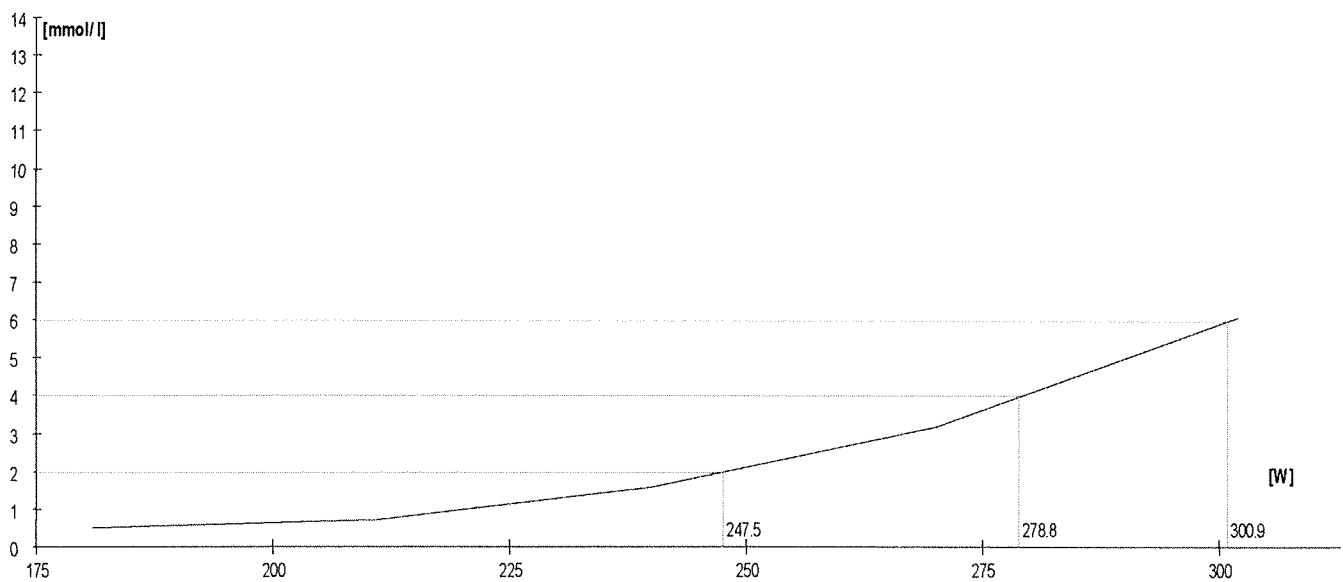
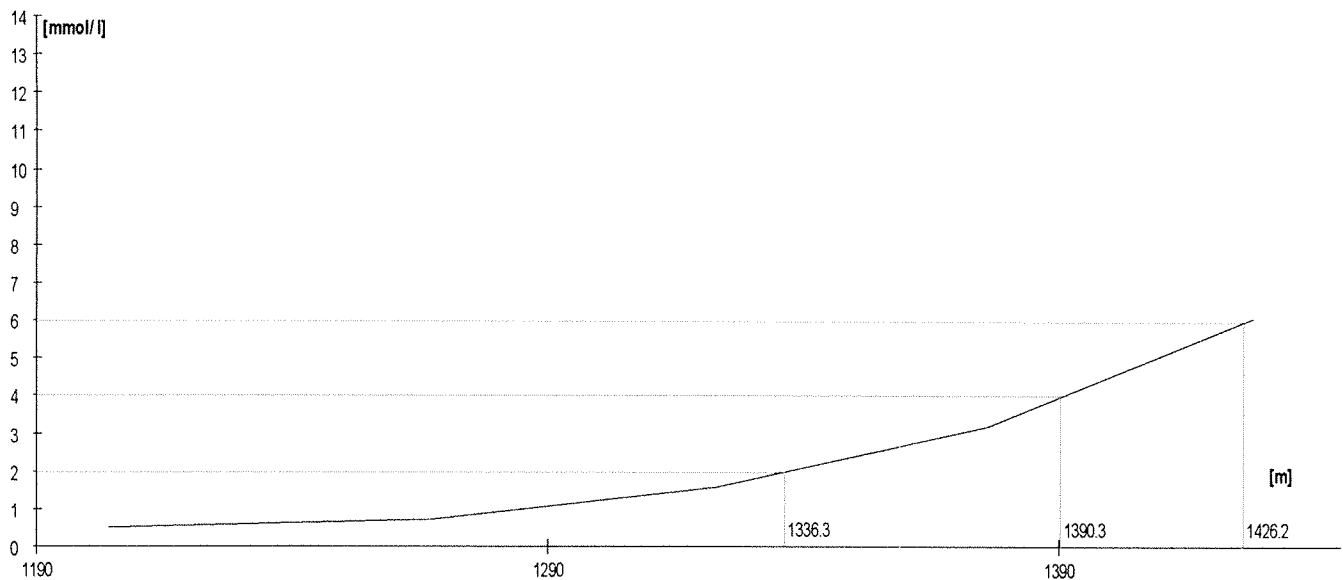
	Rozm. [W]	Výkon [m]	W	TF/min	Lakt.
1.	130	1099	138	152	1,6
2.	160	1156	160	157	1,6
3.	190	1225	191	172	2,8
4.	220	1287	221	181	5,2
5.	250	1342	251	198	9,3

Lakt.	TF/min	W
2.0	162.0	170.3
3.0		
4.0	176.5	206.0
5.0		
6.0	184.3	226.9
7.0		
8.0		



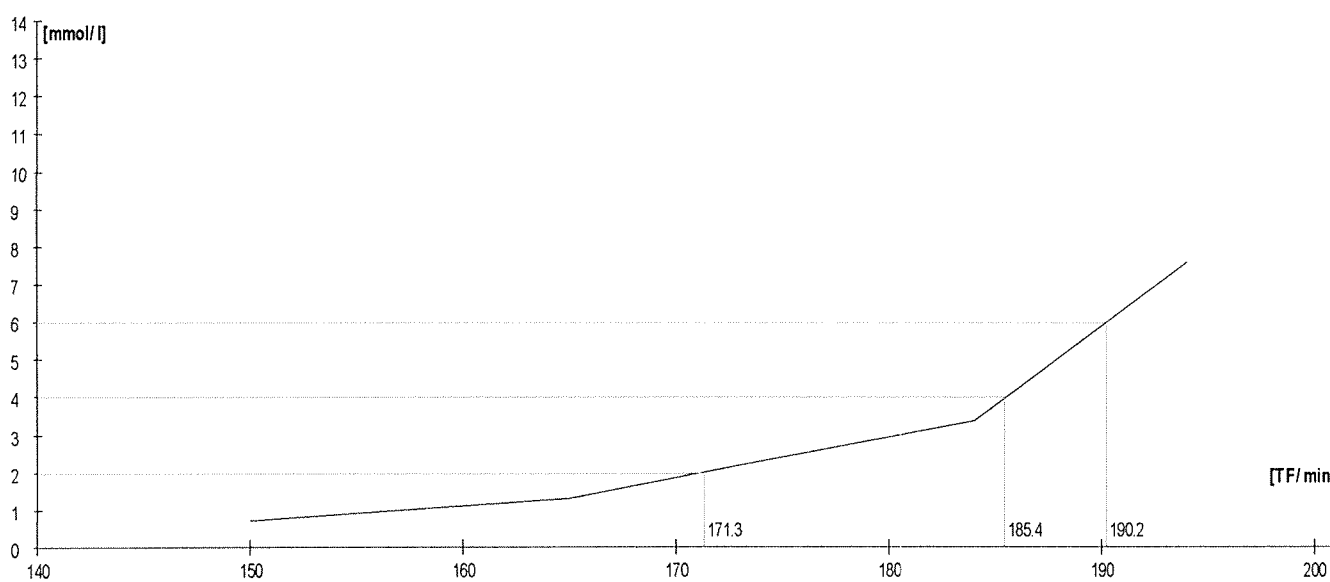
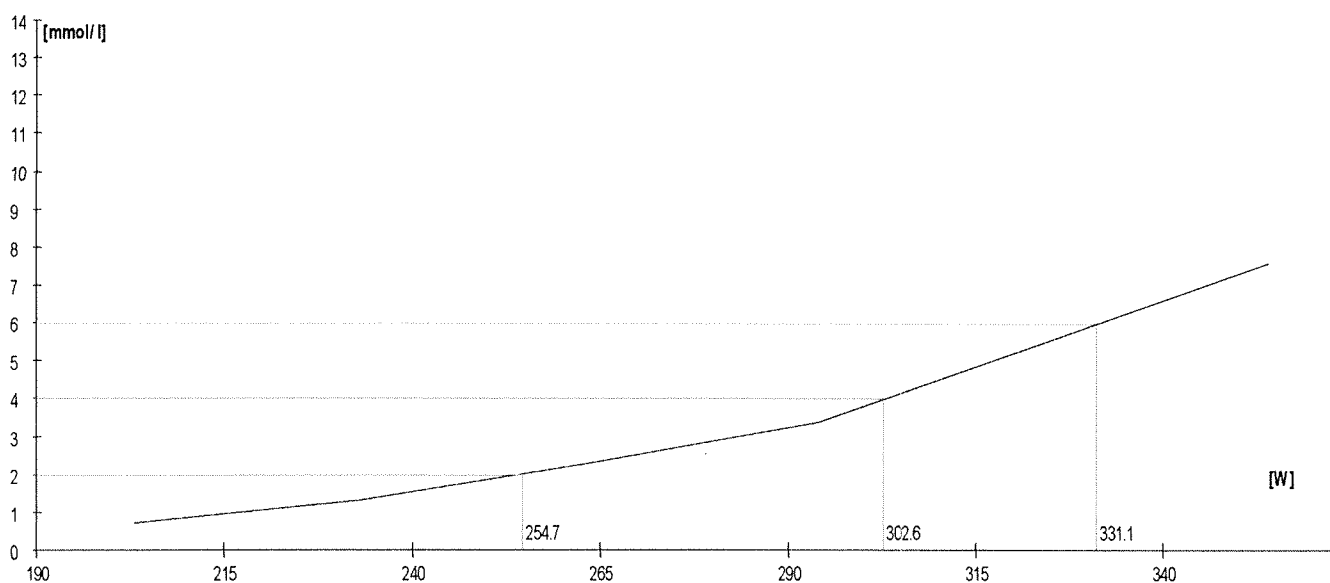
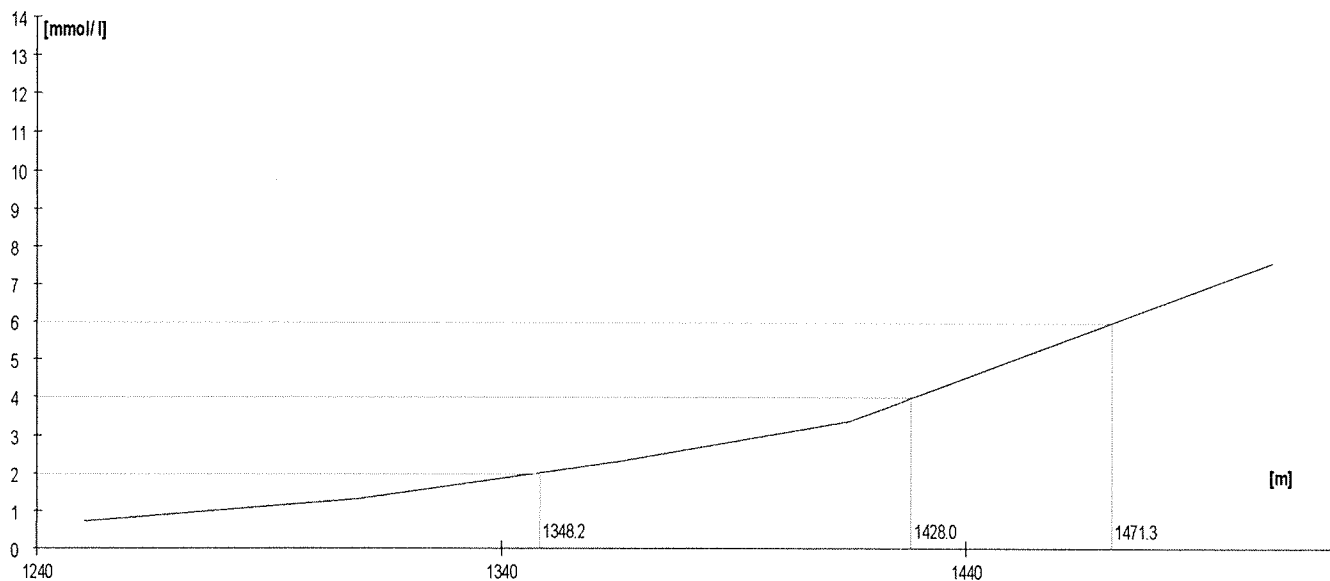
	Rozm. [W]	Výkon [m]	W	TF/min	Lakt.
1.	180	1204	181	147	0,5
2.	210	1267	211	162	0,7
3.	240	1323	240	176	1,6
4.	270	1376	270	186	3,2
5.	300	1428	302	195	6,1

Lakt.	TF/min	W
2.0	178.5	247.5
3.0		
4.0	188.5	278.8
5.0		
6.0	194.7	300.9
7.0		
8.0		



	Rozm. [W]	Výkon [m]	W	TF/min	Lakt.
1.	200	1250	203	150	0,7
2.	230	1309	233	165	1,3
3.	260	1365	264	174	2,3
4.	290	1415	294	184	3,4
5.	320	1506	354	194	7,6

Lakt.	TF/min	W
2.0	171.3	254.7
3.0		
4.0	185.4	302.6
5.0		
6.0	190.2	331.1
7.0		
8.0		



	Rozm.[W]	Výkon [m]	W	TF/min	Lakt.
1.	120	1051	120	170	0,6
2.	140	1108	141	183	1,1
3.	160	1157	161	191	3,0
4.	180	1205	181	195	5,7

Lakt.	TF/min	W
2.0	186.8	150.5
3.0		
4.0	192.5	168.4
5.0		
6.0	195.4	183.2
7.0		
8.0		

